

OFFICE OF NAVIGATION, HYDROGRAPHY AND OCEANOGRAPHY

WEEKLY NOTICES TO MARINERS BULLETIN

NOTICES TO MARINERS (NtM) NUMBERS:

166 - 171

WEEK: 27

05 JULY 2014



Phone : (+90) 216 322 25 80 (4 Lines)
Fax : (+90) 216 331 05 25

E-mail : info@shodb.gov.tr
Web : www.shodb.gov.tr

TABLE OF CONTENTS

- Part 1 Notices to Mariners for Turkish Paper and Leisure Charts
- Part 2 Notices and Amendments for Nautical Publications
- Part 3 Coastal Warnings
- Part 4 NAVAREA-III Warnings
- Part 5 Special Warnings for Mariners
- Part 6 Information

EXPLANATIONS

1. WEEKLY NOTICES TO MARINERS BULLETIN COVERS THE NOTICES FOR THE FOLIOS OF TURKISH PAPER AND LEISURE CHARTS, COVERING THE BLACK SEA, THE SEA OF MARMARA, THE AEGEAN SEA AND THE MEDITERRANEAN SEA.
2. GEOGRAPHICAL POSITIONS ARE GIVEN FOR THE LARGEST SCALED CHART IN THE REGION AND IN ACCORDANCE WITH THE CHART DATUM OF THAT CHART.
3. BEARINGS ARE MEASURED CLOCKWISE FROM 000° (TRUE NORTH)- TO 359°. THE BEARINGS OF THE LIGHTS ARE GIVEN FROM SEAWARD TO THE LIGHTS.
4. TEMPORARY NOTICE TO MARINERS AND PRELIMINARY NOTICES TO MARINERS ARE INDICATED WITH (T) AND (P) BEFORE THE PARAGRAPH.
5. MARINERS ARE REQUESTED TO INFORM SEYİR, HİDROGRAFI VE OŞİNOGRAFI DAİRESİ BAŞKANLIĞI ÇUBUKLU- İSTANBUL WITH THE HYDROGRAPHIC MEMORANDUM AT THE END OF THIS BULLETIN (**) IN CASE OF ANY INFORMATION RELEVANT TO SAFE NAVIGATION.
6. THE PUBLICATIONS OF OFFICE OF NAVIGATION, HYDROGRAPHY AND OCEANOGRAPHY ARE SOLD IN OUR SALES DEPARTMENT AND AUTHORIZED SALES OFFICES.

(*) Temporary Notices to Mariners (T) and Preliminary Notices to Mariners (P) shall be marked on the charts in pencil.

(**) The Hydrographic Memorandum is postage free according to the law numbered 1738 published in the Official Gazette dated June 07, 1973 and numbered 14557.

PAPER AND LEISURE CHARTS

No.	TR Chart No.	Last Update Week-NtM No.-Year	New Edition Date	New Chart Date
1.	2	52-327-13	19.02.2005	
2.	3	10-037-07	08.04.2006	
3.	4	52-327-13	06.10.2007	
4.	10 (INT 310)	25-155-14	24.12.2011	
5.	10 A	49-304-13	14.07.2001	
6.	10 B	41-256-13	16.02.2013	
7.	11 (INT 3802)	40-250-13	15.07.2000	
8.	12 (INT 3804)	38-238-13	20.12.1986	
9.	13 (INT 3806)	31-192-13	24.08.1985	
10.	14	42-263-13	17.02.1990	
11.	14 A	16-099-14	20.02.2010	
12.	15	18-112-14	11.02.2012	
13.	16	14-088-14	22.09.1990	
14.	17	18-110-14	28.01.2012	
15.	18 (INT 3800)	17-106-14	12.04.2003	
16.	19	14-087-14	12.10.1991	
17.	20	40-252-13	20.01.2001	
18.	20 A	40-252-13	05.11.1994	
19.	21	27-170-14	22.04.2000	
20.	22 A	25-159-14	15.07.2000	
21.	22 B	25-158-14	24.11.2012	
22.	23	27-170-14	20.01.2001	
23.	24	19-116-14	04.03.1995	
24.	25	50-311-13	24.06.2000	
25.	26	26-165-14	10.07.2004	
26.	29 (INT 3708)	01-001-14	22.09.2012	
27.	30 (INT 308)	17-109-14	30.08.2003	
28.	31	25-159-14	25.05.2002	
29.	32 (INT 3600)	20-123(P)-14	28.01.2012	
30.	33 (INT 3602)	20-123(P)-14	17.11.2012	
31.	34	22-135-14	31.12.2011	
32.	35	15-097-14	19.10.1991	
33.	36	05-033-14	11.02.2012	
34.	37	17-109-14	-----	25.04.2009
35.	111	23-139-14	24.12.2011	
36.	112	23-138-14	04.03.2006	
37.	113	30-184-13	05.07.2003	
38.	121	38-238-13	24.11.2007	
39.	122	36-227-13	02.10.1999	
40.	123	24-145-14	14.03.1992	
41.	131	41-257-13	31.01.2004	
42.	132	02-010-14	10.11.1979	
43.	133	25-153-13	05.12.1975	
44.	141	24-143-14	12.05.2012	
45.	142	25-154-14	21.09.2013	
46.	143	24-144-14	26.10.2013	
47.	144	13-082-14	18.07.2009	
48.	145	36-226-13	-----	16.05.2009
49.	151	22-131-14	10.01.2009	
50.	152	23-136-14	17.03.2012	
51.	154	16-101-14	31.03.2012	
52.	161	14-088-14	30.05.1965	
53.	162	26-155-10	26.07.2008	
54.	171	18-111-14	06.01.1990	
55.	172	18-110-14	04.10.1986	
56.	181	15-093(P)-14	01.02.2003	
57.	193	14-087-14	07.07.2012	
58.	211	26-161-14	14.01.2012	
59.	212 (INT 3750)	22-134-14	18.05.2013	

PAPER AND LEISURE CHARTS

No.	TR Chart No.	Last Update Week-NtM No.-Year	New Edition Date	New Chart Date
60.	213	27-169-14	22.04.2000	
61.	214	09-057-14	22.03.2008	
62.	215	24-152-14	08.12.2012	
63.	221 (INT 3784)	24-152-14	16.02.2013	
64.	222	24-152-14	28.05.2005	
65.	223	24-152-14	22.04.2000	
66.	224	26-163-14	30.08.2003	
67.	291	26-160-14	13.08.2011	
68.	292	21-128-14	09.09.2000	
69.	293	04-023-14	04.07.1998	
70.	294	06-036-14	24.03.2012	
71.	295 (INT 3752)	22-134-14	11.02.2012	
72.	311	19-117-14	24.03.2012	
73.	312	23-141-14	24.05.2003	
74.	313	30-188-13	15.12.2001	
75.	321	24-149-14	18.03.2006	
76.	322 (INT 3651)	24-149-14	07.04.2007	
77.	323	11-072-14	10.01.1981	
78.	324	20-123(P)-14	24.09.1977	
79.	331	23-142-14	05.07.2003	
80.	332	24-150-14	28.03.2009	
81.	333 (INT 3656)	50-313-13	31.12.2011	
82.	334 (INT 3660)	19-118-14	24.11.2012	
83.	335	06-036-13	13.11.1971	
84.	341	20-123(P)-14	29.12.2007	
85.	342	25-133-11	05.10.1983	
86.	343	27-171-14	11.09.1999	
87.	344	27-171-14	28.04.2012	
88.	345	27-171-14	04.02.2012	
89.	1111	23-139-14	-----	04.05.2013
90.	1121	03-016-14	29.10.2005	
91.	1131	16-102-14	18.07.2009	
92.	1132	41-258-13	-----	26.09.2009
93.	1221	-----	-----	27.04.2013
94.	1231	38-243-13	24.03.2012	
95.	1311 (INT 3856)	44-275-13	22.01.2011	
96.	1312	41-257-13	-----	22.10.2011
97.	1321	02-010-14	25.06.2011	
98.	1322	25-153-13	-----	07.02.2009
99.	1331	10-062-14	23.02.2008	
100.	1332	16-095-13	19.04.2008	
101.	1402	21-125-14	09.05.2009	
102.	1411 (INT 3860)	24-143-14	27.11.2010	
103.	1412	24-143-14	-----	16.04.2011
104.	1421	25-154-14	08.12.2012	
105.	1431	22-137-13	27.10.2012	
106.	1432	24-144-14	-----	22.10.2011
107.	1501	27-167-14	05.07.2008	
108.	1611	01-001-12	05.07.2008	
109.	1722	22-130-14	09.06.2012	
110.	1723	27-166-14	16.04.2005	
111.	1811 (INT 3758)	15-093(P)-14	23.06.2012	
112.	1821	37-234-13	07.10.2006	
113.	1822	17-105-14	22.09.2012	
114.	1911	23-136-14	09.06.2012	
115.	2111	51-319-13	04.09.2004	
116.	2112	30-186-13	-----	29.08.2009
117.	2121	23-140-14	-----	17.04.2010
118.	2122	09-056-14	-----	27.03.2010

PAPER AND LEISURE CHARTS

No.	TR Chart No.	Last Update Week-NtM No.-Year	New Edition Date	New Chart Date
119.	2123	09-056-14	-----	20.03.2010
120.	2124	22-134-14	-----	02.01.2010
121.	2131	26-161-14	08.03.2008	
122.	2132	10-055-11	-----	08.03.2008
123.	2133	21-130-13	-----	13.02.2010
124.	2134	27-169-14	04.05.2013	
125.	2136	27-169-14	28.10.2000	
126.	2141	09-057-14	14.09.1996	
127.	2142	42-244-12	15.01.1994	
128.	2143	15-089-13	14.11.2006	
129.	2144	09-057-14	20.01.2007	
130.	2145	25-157-13	06.10.2007	
131.	2146	15-089-13	07.04.2007	
132.	2147	26-162-14	08.12.2012	
133.	2148	-----	24.11.2012	
134.	2150	16-099-13	24.11.2012	
135.	2151	26-162-14	15.12.2012	
136.	2211	11-062-13	24.11.2012	
137.	2212 (INT 3785)	18-113-13	24.11.2012	
138.	2213	34-213-13	24.11.2012	
139.	2214	24-152-14	01.12.2012	
140.	2215	24-152-14	24.11.2012	
141.	2223	26-164-14	07.01.2012	
142.	2224	08-048-13	09.11.2013	
143.	2231	09-058-14	27.11.2010	
144.	2233	46-272-10	-----	26.09.2009
145.	2234	06-034-13	-----	10.01.2009
146.	2235	24-152-14	02.01.2010	
147.	2241	06-033-13	11.01.1975	
148.	2245	06-033-13	30.05.1981	
149.	2246	24-148-14	14.01.2012	
150.	2247	26-163-14	28.04.2001	
151.	2248	40-230-12	26.05.1990	
152.	2911	26-160-14	06.08.2011	
153.	2916	39-248-13	-----	15.10.2005
154.	2919	20-120-14	29.09.2007	
155.	2920	15-096-14	15.11.2008	
156.	2921 (INT 3756)	27-168-14	13.10.2012	
157.	2921 A	25-156-14	17.12.2011	
158.	2921 B	27-168-14	19.05.2012	
159.	2922	-----	12.04.2014	
160.	2923 (INT 3754)	24-151-14	09.09.2000	
161.	2924	11-069-14	28.10.2000	
162.	2925	38-204-09	29.12.2007	
163.	2926	21-128-14	23.02.2002	
164.	2927	24-153-14	18.02.2012	
165.	2929	24-151-14	13.10.2012	
166.	2931	48-299-13	14.09.1996	
167.	2941	22-132-14	12.07.2008	
168.	2942	34-210-13	04.07.2009	
169.	3110	19-117-14	18.02.2012	
170.	3111	34-215-13	12.10.1991	
171.	3112	34-215-13	22.08.1992	
172.	3113	13-084-14	29.06.2002	
173.	3121	02-012-13	25.06.2011	
174.	3122	23-141-14	31.12.2011	
175.	3123	02-012-13	-----	23.10.2010
176.	3131	51-307-12	17.12.2005	
177.	3211	51-307-12	17.12.2005	

PAPER AND LEISURE CHARTS

No.	TR Chart No.	Last Update Week-NtM No.-Year	New Edition Date	New Chart Date
178.	3212	30-188-13	10.12.2011	
179.	3221 (INT 3653)	51-322-13	10.12.2011	
180.	3222 (INT 3652)	51-322-13	15.07.2006	
181.	3223	24-149-14	-----	24.03.2007
182.	3310	23-142-14	-----	21.02.2009
183.	3331 (INT 3657)	33-207-13	10.06.2006	
184.	3341	14-086-13	21.01.2012	
185.	3342 (INT 3661)	11-073-14	01.12.2012	
186.	3343	19-118-14	-----	14.07.2007
187.	3344	08-047-11	08.01.1994	
188.	3361	41-200-11	03.12.2005	
189.	3401	07-047-14	13.07.2013	
190.	3402	22-135-14	20.07.2013	
191.	3403	52-260-08	26.04.2003	
192.	8005	31-194-10	20.12.1975	
193.	8006	31-194-10	04.05.1985	
No.	Leisure Chart No.	Last Update Week-NtM No.-Year	New Edition Date	New Chart Date
1.	2002_1	36-228-13	-----	09.05.2009
2.	2002_2	25-156-13	-----	09.05.2009
3.	2002_3	26-161-14	-----	09.05.2009
4.	2002_4	26-161-14	-----	09.05.2009
5.	2002_5	27-169-14	-----	09.05.2009
6.	2002_6	09-057-14	-----	09.05.2009
7.	2002_7	09-057-14	-----	09.05.2009
8.	2002_8	41-236-12	-----	09.05.2009
9.	2002_9	42-244-12	-----	09.05.2009
10.	2002_10	25-156-13	-----	09.05.2009
11.	2002_11	-----	-----	09.05.2009
12.	2002_12	25-156-13	-----	09.05.2009
13.	2002_13	50-237-11	-----	09.05.2009
14.	2002_14	50-237-11	-----	09.05.2009
15.	2002_15	25-157-13	-----	09.05.2009
16.	2003_1	46-290-13	-----	21.03.2009
17.	2003_2	26-162-14	-----	21.03.2009
18.	2003_3	10-065-14	-----	21.03.2009
19.	2003_4	26-164-14	-----	21.03.2009
20.	2003_5	01-004-14	-----	21.03.2009
21.	2003_6	01-004-12	-----	21.03.2009
22.	2003_7	06-037-14	-----	21.03.2009
23.	2003_8	19-120-13	-----	21.03.2009
24.	2003_9	18-113-13	-----	21.03.2009
25.	2003_10	24-127-11	-----	21.03.2009
26.	2003_11	21-120-12	-----	21.03.2009
27.	2003_12	24-127-11	-----	21.03.2009
28.	2003_13	21-120-12	-----	21.03.2009
29.	2003_14	01-002-14	-----	21.03.2009
30.	2003_15	46-220-11	-----	21.03.2009
31.	2003_16	34/35-172-11	-----	21.03.2009

PAPER AND LEISURE CHARTS

No.	Leisure Chart No.	Last Update Week-NtM No.-Year	New Edition Date	New Chart Date
32.	2004_1	52-324-13	-----	26.05.2007
33.	2004_2	09-058-14	-----	26.05.2007
34.	2004_3	51-320-13	-----	26.05.2007
35.	2004_4	26-163-14	-----	26.05.2007
36.	2004_5	09-058-14	-----	26.05.2007
37.	2004_6	38-215(P)-12	-----	26.05.2007
38.	2004_7	04-022-13	-----	26.05.2007
39.	2004_8	22-133-14	-----	26.05.2007
40.	2004_9	28-176-13	-----	26.05.2007
41.	2004_10	26-163-14	-----	26.05.2007
42.	2004_11	26-163-14	-----	26.05.2007
43.	2004_12	40-230-12	-----	26.05.2007
44.	2004_13	40-230-12	-----	26.05.2007
45.	2004_14	40-230-12	-----	26.05.2007
46.	2901_1	01-001-14	-----	01.03.2008
47.	2901_2	21-128-14	-----	01.03.2008
48.	2901_3	09-055-14	-----	01.03.2008
49.	2901_4	42-265-13	-----	01.03.2008
50.	2901_5	34-211-13	-----	01.03.2008
51.	2901_6	09-055-14	-----	01.03.2008
52.	2901_7	19-114-14	-----	01.03.2008
53.	2901_8	06-035-14	-----	01.03.2008
54.	2901_9	26-160-14	-----	01.03.2008
55.	2901_10	21-128-14	-----	01.03.2008
56.	2901_11	10-056-13	-----	01.03.2008
57.	2901_12	25-156-14	-----	01.03.2008
58.	2901_13	39-247-13	-----	01.03.2008
59.	2901_14	48-298-13	-----	01.03.2008
60.	2901_15	20-120-14	-----	01.03.2008
61.	2901_16	19-114-14	-----	01.03.2008
62.	2901_17	46-271-10	-----	01.03.2008
63.	2901_18	31-195-13	-----	01.03.2008
64.	2901_19	15-084-10	-----	01.03.2008
65.	2901_20	48-299-13	-----	01.03.2008
66.	2901_21	36-209-10	-----	01.03.2008
67.	2901_22	15-084-10	-----	01.03.2008
68.	2902_1	45-261(T)-12	-----	21.06.2008
69.	2902_2	48-299-13	-----	21.06.2008
70.	2902_3	06-036-14	-----	21.06.2008
71.	2902_4	06-036-14	-----	21.06.2008
72.	2902_5	08-048(T)-14	-----	21.06.2008
73.	2902_6	22-134-14	-----	21.06.2008
74.	2902_7	22-134-14	-----	21.06.2008
75.	2902_8	09-056-14	-----	21.06.2008
76.	2902_9	50-310-13	-----	21.06.2008
77.	2902_10	22-132-14	-----	21.06.2008
78.	2902_11	09-056-14	-----	21.06.2008
79.	2902_12	21-127-14	-----	21.06.2008
80.	2902_13	24-129-11	-----	21.06.2008
81.	2902_14	20-125-13	-----	21.06.2008
82.	2902_15	24-129-11	-----	21.06.2008
83.	2902_16	32-162-11	-----	21.06.2008
84.	2902_17	42-266-13	-----	21.06.2008

PAPER AND LEISURE CHARTS

No.	Leisure Chart No.	Last Update Week-NtM No.-Year	New Edition Date	New Chart Date
85.	3001_1	52-324-12	-----	27.05.2006
86.	3001_2	19-117-14	-----	27.05.2006
87.	3001_3	47-295-13	-----	27.05.2006
88.	3001_4	27-168-13	-----	27.05.2006
89.	3001_5	42-245-12	-----	27.05.2006
90.	3001_6	19-117-14	-----	27.05.2006
91.	3001_7	33-187-12	-----	27.05.2006
92.	3001_8	26-138-11	-----	27.05.2006
93.	3001_9	26-138-11	-----	27.05.2006
94.	3001_10	52-325-13	-----	27.05.2006
95.	3001_11	48-281-12	-----	27.05.2006
96.	3002_1	02-011-14	-----	27.05.2006
97.	3002_2	23-141-14	-----	27.05.2006
98.	3002_3	30-188-13	-----	27.05.2006
99.	3002_4	30-188-13	-----	27.05.2006
100.	3002_5	37-209(P)-12	-----	27.05.2006
101.	3002_6	03-019-14	-----	27.05.2006
102.	3002_7	23-141-14	-----	27.05.2006
103.	3002_8	20-108-11	-----	27.05.2006
104.	3002_9	09-052-12	-----	27.05.2006
105.	3002_10	30-188-13	-----	27.05.2006

NOTICES TO MARINERS FOR TURKISH PAPER AND LEISURE CHARTS PART 1

1. ANNOUNCEMENTS

NEW CHARTS:

Chart No: Edition Date: Withdrawn Charts:

NEW EDITIONS :

Chart No: Edition Date: Withdrawn Charts:

REPRINT CHARTS:

Chart No: Edition Date: Previously Updated NtM No:

2. NOTICES TO MARINERS

<u>NtM No:</u>	<u>Charts Affected :</u>
166	1723
167	1501
168	2921B 2921 (INT 3756)
169	2134 2136 213 21 2002_5
170	23 21
171	345 344 343

NOTICES TO MARINERS FOR TURKISH PAPER AND LEISURE CHARTS PART 1

166 **BLACK SEA - Ukraine - Approaches to İllichivs'k (İlliçevs'k) - Obstruction**
SOURCE: BA.NtM No.: 26-2685/14

Chart 1723 (İllichivs'k (İlliçevs'k) Yaklaşması, Plan B) (Previous NtM No: 111/2014) [WGS84 DATUM]

INSERT  46°19'.41N, 30°43'.53E

167 **BLACK SEA - Russia - Novorossiyskaya Bay - Sheskharis - Obstruction**
SOURCE: BA.NtM No.: 23-2371/14

Chart 1501 (Sheskharis, Plan B) (Previous NtM No: 126/2014) [WGS84 DATUM]

INSERT  44°42'.750N, 37°50'.093E

Chart 1501 (Previous NtM No: 126/2014) [WGS84 DATUM]

INSERT  44°42'.750N, 37°50'.093E

168 **STRAIT OF ISTANBUL - Eminönü - Haliç - Block Chart**
SOURCE: ONHO

Chart 2921 (INT 3756) (Haliç, Plan A) (Previous NtM No: 156/2014) [WGS84 DATUM]

INSERT *The accompanying block chart* 41°01'.34N, 28°58'.01E
(centered on)

Chart 2921 (INT 3756) (Previous NtM No: 156/2014) [WGS84 DATUM]

INSERT *The accompanying block chart* 41°01'.45N, 28°58'.58E
(centered on)

Chart 2921B (Previous NtM No: 044/2014) [WGS84 DATUM]

INSERT *The accompanying block chart* 41°01'.40N, 28°58'.62E
(centered on)

NOTICES TO MARINERS FOR TURKISH PAPER AND LEISURE CHARTS PART 1

169 *AEGEAN SEA - Turkey, Northwest Coast - South of Gökçeada - Wreck*
SOURCE: ONHO

Chart 2134 (Previous NtM No: 161/2014) [WGS84 DATUM]

INSERT ++ 39°59'.85N, 25°58'.89E

Chart 2136 (Previous NtM No: 161/2013) [ED50 DATUM]

INSERT ++ 39°59'.84N, 25°53'.32E
39°59'.91N, 25°58'.92E

Chart 213 (Previous NtM No: 161/2014) [ED50 DATUM]

INSERT ++ 39°57'.01N, 25°48'.33E
39°59'.84N, 25°53'.32E
39°57'.01N, 25°51'.22E
39°59'.91N, 25°58'.92E

Chart 21(Previous NtM No: 319/2013) [ED50 DATUM]

INSERT ++ 39°57'.01N, 25°48'.33E
39°59'.84N, 25°53'.32E
39°57'.01N, 25°51'.22E
39°59'.91N, 25°58'.92E

Leisure Chart 2002_5 (Previous NtM No: 310/2013) [WGS84 DATUM]

INSERT ++ 39°56'.95N, 25°48'.30E
39°59'.78N, 25°53'.29E
39°56'.95N, 25°51'.19E
39°59'.85N, 25°58'.89E

NOTICES TO MARINERS FOR TURKISH PAPER AND LEISURE CHARTS PART 1

170 **AEGEAN SEA - Greece - Nisos Tasos - Limenaria - Light**
SOURCE: BA.NtM No.: 24-2490/14

Chart 23 (Previous NtM No: 024/2014) [ED50 DATUM]

DELETE  Fl.G.3M 40°37'.69N, 24°34'.23E

Chart 21 (Previous NtM No: 169/2014) [ED50 DATUM]

DELETE  FIG3M 40°37'.69N, 24°34'.23E

171 **MEDITERRANEAN SEA - Greek Cypriot Administration of Southern Cyprus - Limasol Harbour - Larnaka Harbour - Limasol - Larnaka - Vasilikos - Moni - Baf - Dikelya - Chart Border - Note**
SOURCE: ONHO

Chart 345 (Previous NtM No: 135/2013) [WGS84 DATUM]

INSERT 
(Explanation: in Magenta) North : 34°45'.75N
South : 34°42'.78N
East : 32°26'.80E
West : 32°23'.00E

3402 G 34°42'.92N, 32°23'.30E
(centered on)

DELETE 
North : 34°46'.07N
South : 34°42'.42N
East : 32°28'.90E
West : 32°22'.80E

3402 F 34°42'.50N, 32°23'.04E

Chart 344 (Previous NtM No: 135/2014) [WGS84 DATUM]

INSERT 
(Explanation: in Magenta) North : 34°43'.20N
South : 34°33'.00N
East : 33°03'.70E
West : 32°58'.70E

NOTICES TO MARINERS FOR TURKISH PAPER AND LEISURE CHARTS PART 1

171 (continued)

<hr/> (Explanation: in Magenta)	North : 34°39'.60N South : 34°38'.58N East : 33°02'.56E West : 33°00'.35E
3402 B	34°38'.65N, 33°02'.20E (centered on)
<hr/> (Explanation: in Magenta)	North : ----- South : 34°51'.51N East : 33°45'.50E West : 33°34'.70E
3402 C	34°51'.62N, 33°44'.80E (centered on)
<hr/> (Explanation: in Magenta)	North : 34°43'.74N South : 34°41'.96N East : 33°20'.30E West : 33°17'.58E
3402 D	34°42'.00N, 33°20'.10E (centered on)
<hr/> (Explanation: in Magenta)	North : 34°55'.94N South : 34°54'.92N East : 33°39'.22E West : 33°37'.99E
3402 E	34°55'.00N, 33°38'.95E (centered on)
<hr/> (Explanation: in Magenta)	North : 34°43'.50N South : 34°40'.51N East : 33°12'.04E West : 33°09'.40E
3402 F	34°40'.60N, 33°09'.70E (centered on)

NOTICES TO MARINERS FOR TURKISH PAPER AND LEISURE CHARTS	PART 1
---	---------------

171 (continued)

DELETE	_____	<i>North</i> : - - - - -
		<i>South</i> : 34°56'.93N
		<i>East</i> : 33°45'.64E
		<i>West</i> : 33°42'.25E
	3402 A	34°57'.00N, 33°42'.56E
	_____	<i>North</i> : 34°56'.37N
		<i>South</i> : 34°51'.70N
		<i>East</i> : 33°42'.68E
		<i>West</i> : 33°36'.10E
	3402 B	34°51'.77N, 33°42'.26E
	_____	<i>North</i> : 34°43'.92N
		<i>South</i> : 34°42'.42N
		<i>East</i> : 33°19'.64E
		<i>West</i> : 33°18'.20E
	3402 C	34°43'.79N, 33°19'.24E
	_____	<i>North</i> : 34°40'.36N
		<i>South</i> : 34°40'.08N
		<i>East</i> : 33°02'.93E
		<i>West</i> : 33°02'.16E
	3402 C	34°40'.43N, 33°03'.11E
	_____	<i>North</i> : 34°41'.50N
		<i>South</i> : 34°33'.00N
		<i>East</i> : 33°05'.25E
		<i>West</i> : 32°59'.38E
	3402 D	34°33'.05N, 32°59'.61E

NOTICES TO MARINERS FOR TURKISH PAPER AND LEISURE CHARTS	PART 1
---	---------------

171 (continued)

Chart 343 (Previous NtM No: 135/2014) [ED50 DATUM]

INSERT

(Explanation: in Magenta)

North : 35°01'.70N

South : 34°51'.51N

East : 33°45'.50E

West : 33°34'.70E

3402 C

34°51'.62N, 33°44'.80E
(centered on)

(Explanation: in Magenta)

North : 34°55'.94N

South : 34°54'.92N

East : 33°39'.22E

West : 33°37'.99E

3402 E

34°55'.00N, 33°38'.95E
(centered on)

DELETE

North : 35°00'.57N

South : 34°56'.93N

East : 33°45'.64E

West : 33°42'.25E

3402 A

34°56'.89N, 33°42'.54E

North : 34°56'.37N

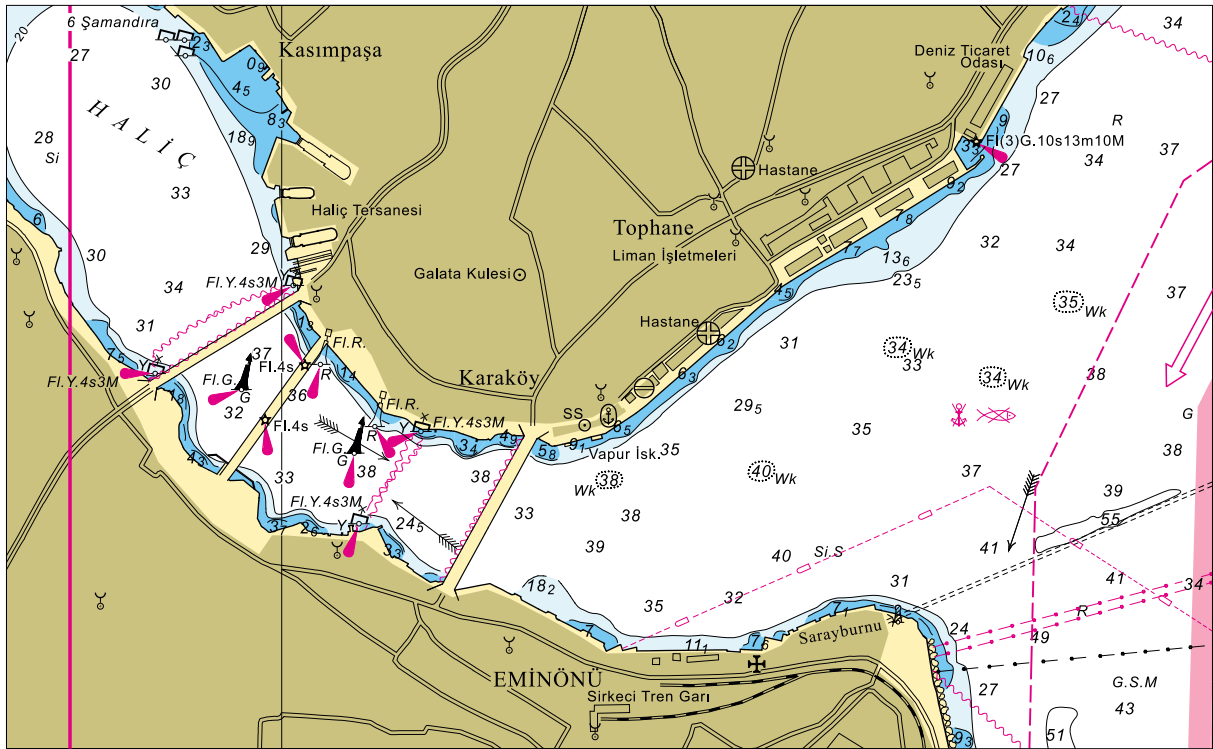
South : 34°51'.70N

East : 33°42'.68E

West : 33°36'.10E

3402 B

34°51'.69N, 33°42'.33E



Relevant Chart : 2921B

No Amendment to the Nautical Publications.

In order to get information about the navigational warnings promulgated by Office of Navigation Hydrography and Oceanography, see Notices to Mariners Annual Part 09. The notices below include the NAVIGATIONAL WARNINGS promulgated by our office with a NAVTEX number by 01 JUL 2014 1300Z and the WARNINGS submitted to our office but not assigned with a NAVTEX number and not promulgated yet.

(1) Navigational Warnings Currently in Force**2012 SERIES****056. AEGEAN SEA**

Uncharted marine farms dangerous to navigation in area between the line joining below positions and Turkish coasts.

38°35'.00N, 26°21'.70E
 38°35'.00N, 26°20'.00E
 38°30'.00N, 26°22'.00E
 38°22'.70N, 26°17'.00E

2012 SERIES**008. SEA OF MARMARA**

1) Dredging operations from 07 JAN 13 to a further notice. Removed objects will be poured out to the area within 1000 meter radius of 40°45' 16"N – 029°11' 43"E.

40°44' 04"N - 029°30' 34"E
 40°44' 32"N - 029°31' 07"E
 40°44' 36"N - 029°30' 33"E
 40°46' 02"N - 029°30' 47"E
 40°45' 59"N - 029°31' 21"E

2) Service quay and wharf in:

40°41' 46"N 029°33' 27"E
 40°41' 27"N 029°33' 08"E
 40°41' 55"N 029°32' 42"E
 40°42' 05"N 029°33' 04"E

021. RED SEA - GULF OF ADEN - SOMALIA

1. For the piracy activities in the Gulf of Aden, Somalia, the following warning message is issued by the NATO warships navigating in the region in VHF Channel 16:

"Security, Security, Security, this is NATO warship with a maritime awareness call. NATO warships are conducting security operations in this area under the request of the United Nations. If you observe any suspicious or illegal activity or require any assistance, please call any warship on CH 16 or report to the NATO Shipping Centre free call number 00 44 1923 843 574"

2. Maritime Safety Patrol Area (MSPA) was established against the piracy activities for the protection of the vessels. See "marad advisories" type warnings on the "broadcast warnings" submenu of www.nga.mil/portal/site/maritime for the relevant information and points of contact available 24 hours.

024. AEGEAN SEA

Uncharted marine farms dangerous to navigation in:

AREA - I	AREA - II	AREA - III
Latitudes :37°12' 00"N, 37°19' 00"N	Latitudes :37°07' 00"N, 37°12' 00"N	38°10'43"N - 26°42'18"E
Longitudes :27°20' 00"E, 27°33' 00"E	Longitudes :27°22' 00"E, 27°32' 00"E	38°10'49"N - 26°42'42"E
		38°10'46"N - 26°42'29"E
		38°10'40"N - 26°42'23"E

440. STRAIT OF İSTANBUL

Construction operations until further notice within 500 meters of Fil Point (41°12' 00"N, 029°07' 06"E) and Çalı Point (41°12' 24"N, 029°06' 21"E).

652. AEGEAN SEA

Half-sunken buoys in position below:

39 19.21N, 026 31.37E
39 22.67N, 026 35.05E
38 26.00N, 026 19.67E

671. SEA OF MARMARA

Diving exercises by 15 JUL14 every Friday between 0600Z-1400Z within a 100 meter radius around 40 58.24 N, 028 43.09 E.

707. SEA OF MARMARA

Construction from 11 NOV 13 until further notice in area bounded by:

40°58'.40N - 028°35'.80E
40°58'.07N - 028°35'.43E
40°57'.70N - 028°36'.04E
40°57'.77N - 028°36'.13E

822. MEDITERRANEAN SEA

Underwater survey by "Delta S" between 17 DEC13 - 13 JUL14 along the line joining:

36°18'.07N, 030°16'.68E
36°18'.68N, 030°17'.48E

2014 SERIES**010. MEDITERRANEAN SEA**

Drilling operation by GSP JUPİTER and supporting vessels GSP VEGA and GSP ANTARES from 05 January 2014 to a further notice within 2 NM of 36°27'.38N, 035°41'.92E .

042. SEA OF MARMARA

Starboard light established at 40°46'33"N, 029°42'56"E.

049. AEGEAN SEA

Buoys reported at 140800Z JAN 2014 at following positions.

38°23'.47N - 026°37'.88E
38°23'.43N - 026°37'.78E
38°23'.20N - 026°37'.83E
38°23'.42N - 026°37'.87E

100. SEA OF MARMARA

Buoys in 40°44'.36N - 029°31'.42E and 40°44'.36N - 029°31'.53E offstation.

162. MEDITERRANEAN SEA

Side Antik Harbour Kayalık Light established in 36°46'.05N,031°22'.95E.

NAVTEX WARNINGS**PART 3****164. SEA OF MARMARA**

Karataş Harbour Starboard Light established in 40°57'.72N,027°56'.21E.

166. AEGEAN SEA

- 1) Egesu Marina Port Light established at 37°14'.85N, 027°32'.24E.
- 2) Egesu Marina Starboard Light established at 37°14'.82N, 027°32'.27E.
- 3) Egesu Marina Port Light Buoy established at 37°14'.75N, 027°32'.25E.
- 4) Egesu Marina Starboard Light Buoy established at 37°14'.78N, 027°32'.32E.

306. MEDITERRANEAN SEA

Pipelaying operations in progress until 31 AUG14 along track between 35°59'.04N, 032°48'.99E and 35°22'.90N, 033°04'.93E. 3NM berth requested.

328. SEA OF MARMARA

Underwater operation by Alesta Dalgıçlık, Aykut Kaptan and Deep Blue until 16 JUL 14 in area bounded by:

40°55'.65N - 028°57'.98E
40°49'.21N - 028°58'.27E
40°48'.67N - 029°09'.98E
40°53'.20N - 029°10'.37E

371. MEDITERRANEAN SEA

Port Light established in 36°35'.64N, 036°10'.40E.

391. AEGEAN SEA

Construction works in progress from 14 MAY 14 until further notice in area bounded by:

38°46'.75N,026°55'.45E
38°46'.75N,026°55'.40E
38°46'.45N,026°55'.35E
38°46'.50N,026°55'.30E
38°46'.47N,026°55'.45E
38°46'.68N,026°55'.50E

422. MEDITERRANEAN SEA

Turkish Units participating operation Mediterranean Shield in the Eastern Mediterranean are conducting maritime security operations to provide for the safe and secure movement of vessels at sea and to deter terrorism. If contacted by Turkish Units your cooperation and assistance in answering questions would be very much appreciated. Please report any suspicious activity or information to Turkish warships or to the Turkish Naval Forces Command Operation Center 0 90 312 4032222 / 00 90 312 4176260 or email to denkom(dot)harekatmrk(at)dzkk(dot)tsk(dot)tr. Help us to help you. Thank you.

428. AEGEAN SEA

Buoy established in 40°09'.63N, 25°58'.64E.
Buoy established in 38°46'.45N, 26°55'.37E.

483. BLACK SEA

Drilling operations by GSP PROMETEU and support ships VOS TETHYS, VOS THALASSA and VOS ATHOS within 2 miles of 41°40'.60N, 028°38'.48E from 13 JUN 14 until further notice. Wide berth requested.

491. BLACK SEA

Oceanographic survey, by TUBİTAK Marmara between 22 JUN - 06 JUL 14, in area bound by.

42°37'.30N, 34°22'.31E
42°12'.22N, 35°56'.31E
41°44'.68N, 35°24'.79E
42°00'.04N, 34°21'.50E
Caution advised.

503. BLACK SEA

Seismic survey, by BARBAROS HAYREDDİNPAŞA, M/V BRAVO SUPPORTER and M/V DEEP SUPPORTER, between 27 JUN-16 AUG 14, in are bounded by;

41°07'.41N, 037°24'.66E
41°09'.33N, 037°20'.17E
41°09'.62N, 037°08'.87E
41°11'.82N, 037°03'.35E
41°16'.00N, 037°02'.48E
41°17'.92N, 036°59'.85E
41°20'.70N, 036°53'.73E
41°40'.78N, 037°05'.62E
41°48'.17N, 037°02'.77E
41°19'.27N, 036°20'.72E
41°30'.86N, 036°20'.75E
41°58'.62N, 036°44'.31E
41°21'.05N, 038°08'.91E
41°59'.32N, 037°52'.54E
41°52'.77N, 038°06'.48E
41°06'.18N, 037°27'.51E

6 NM berth requested.

507. SEA OF MARMARA

Sailing races, between 28 JUN -01 JUL 14, from 0700Z to 1700Z on DRAGOS racecourse.

508. AEGEAN SEA

Sailing races, between 30 JUN -05 JUL 14, from 0700Z to 1700Z on ÇEŞME racecourse.

510. BLACK SEA

Firing exercise, between 30 JUN - 25 JUL 14, from 0700Z to 1530Z, in area LT-D6.

LT - D6

41°15'00"N, 30°10'00"E
41°25'00"N, 30°10'00"E
41°25'00"N, 31°00'00"E
41°15'00"N, 31°00'00"E

Caution advised.

512. BLACK SEA

Firing exercise, between 30 JUN - 25 JUL 14, from 0700Z to 1530Z, in are bound by;

42°24'00"N, 29°44'00"E
42°47'00"N, 30°44'00"E
41°30'00"N, 31°26'00"E
41°26'00"N, 30°11'00"E

Caution advised.

Week: 27/2014

513. BLACK SEA

Firing exercise, between 30 JUN - 25 JUL 14, from 0700Z to 1530Z, in are bound by;

42°11'00"N, 29°24'00"E
42°25'00"N, 30°09'00"E
41°49'00"N, 30°50'00"E
41°45'00"N, 30°23'00"E

Caution advised.

514. BLACK SEA

Firing exercise, between 30 JUN - 25 JUL 14, from 0800Z to 1500Z, in are bound by;

41°53'00"N, 30°51'00"E
41°50'00"N, 31°45'00"E
41°52'00"N, 31°45'00"E
41°50'00"N, 32°26'00"E
41°39'00"N, 32°25'00"E
41°41'00"N, 31°44'00"E
41°45'00"N, 31°44'00"E
41°48'00"N, 30°51'00"E

Caution advised.

516. MEDITERRANEAN SEA

Oceanographic survey, by R/V LAMAS - 1, between 30 JUN - 04 JUL 14, in are bound by;

36°35'.80N, 36°11'.23E
36°39'.67N, 36°09'.53E
36°36'.37N, 34°19'.38E
36°33'.90N, 34°15'.32E
36°26'.05N, 34°20'.83E

Caution advised.

520. AEGEAN SEA

Firing exercise, on 02 and 03 JUL 14, from 0600Z to 1300Z, in are bound by;

38°33' 00"N,26°45' 00"E
38°34' 00"N, 26°43' 00"E
38°31' 00"N, 26°41' 00"E
38°32' 00"N, 26°39' 00"E

Caution advised.

521. BLACK SEA

Gunnery exercise on 03 and 04 JUL 14, from 1100Z to 1500Z, in are bound by;

41°10' 00"N,29°35' 00"E
41°19' 00"N, 29°30' 00"E
41°18' 00"N, 29°53' 00"E
41°08' 00"N, 29°48' 00"E

Caution advised.

523. SEA OF MARMARA

Haydarpaşa south breakwater light, 40°59'.80N,29°00'.80E unlit.

524. SEA OF MARMARA

Temporary light buoy established at 40°32'.70N,27°16'.17E.

2) Navigational warnings to be promulgated :**... SEA OF MARMARA**

Sailing races, on 19-20 JUL 14 in the Bay of İzmit.

... STRAIT OF İSTANBUL

"İSTANBUL STRAIT INTERCONTINENTAL SWIMMING RACE" will be held in Strait of İstanbul on July 20th 2014.

... SEA OF MARMARA - AEGEAN SEA

Yacht races, on 11-17 AGU 14 on İstanbul - İzmir racecourse.

... STRAIT OF İSTANBUL

"BAU İSTANBUL STRAIT CUP YATCH RACES" will be held on October 11st 2014 in Strait of İstanbul.

Part 4 includes the NAVIGATIONAL WARNINGS currently in force submitted to NAVAREA III Area Coordinator to 02 JUL14 0600Z. Coastal Warnings submitted to NAVAREA III Area coordinator are not included in this section in order to avoid duplication. They have been promulgated in Part 3 with a National NAVTEX number.

Navigational warnings _____ :
2013 SERIES

113. TUNISIA EAST COAST

KLEBIA, NAVTEX station is offline.

263. BLACK SEA - GEORGIA

Restricted area in area bounded by:

43°23'.08N, 40°00'.36E
43°14'.42N, 39°48'.54E
43°12'.02N, 40°00'.24E
43°05'.42N, 40°04'.24E
43°02'.00N, 40°09'.00E
42°59'.06N, 40°14'.48E
42°58'.06N, 40°23'.36E
42°55'.30N, 40°28'.48E
42°54'.36N, 40°35'.12E
42°54'.00N, 40°43'.48E
42°52'.24N, 40°46'.00E
42°49'.00N, 40°51'.30E
42°43'.24N, 40°55'.00E
42°39'.24N, 40°59'.36E
42°37'.24N, 41°05'.24E
42°36'.24N, 41°13'.00E
42°35'.24N, 41°15'.18E
42°31'.06N, 41°17'.00E
42°23'.07N, 41°18'.23E
42°24'.30N, 41°33'.23E

637. MEDITERRANEAN SEA - LIBYA

Current meter buoys moored in following positions:

- 1) Bottom depth of 1902 meters in position 32°40'.69N, 017°59'.90E cable with top buoy at depth of 60 meters.
- 2) Bottom depth of 824 meters in position 32°31'.20N, 019°48'.32E cable with top buoy at depth of 60 meters.

2014 SERIES

021. MEDITERRANEAN SEA - LIBYA

Current meters have been moored in following positions:

- 1) Bottom depth of 870 meters in position 32°33'.65N, 019°49'.03E, cable with top buoy at depth around 100 meters.
- 2) Bottom depth of 1964 meters in position 32°39'.67N, 017°56'.02E, cable with top buoy at depth around 50 meters. 1000 meters berth requested.

142. BLACK SEA - ROMANIA

Anchoring prohibited until 01OCT14 within 500 meter of 43°52'.23N - 030°45'.96E.

166. BLACK SEA

Russian Black Sea Fleet Hydrography department provides maritime safety navigation broadcasting navigational warnings and issue Notices to Mariners at area of Crimean coast and inshore waters. Navigators and Crimean harbour masters requested to report any information concerning changes which effect on maritime safety navigation and address to Black Sea Fleet hydrographic department via 299007 Sevastopol Gogol STR 37 Tel/Fax 0692-54-48-34/0692-54-45-07 E-mail gsblsf@mail.ru.

204. BLACK SEA - ROMANIA

Wreck with depth 31 meters in position 43°57'.40N - 028°42'.31E.

239. STRAIT OF KERCH

Geophysical operations till 01 SEP14 spread 200 meters in width on both sides, along the following three trackline.

TRACKLINE 1	TRACKLINE 2	TRACKLINE 3
45°17'50"N, 36°31'00"E	45°20'60"N, 36°40'30"E	45°20'80"N, 36°40'90"E
45°18'50"N, 36°28'80"E	45°22'30"N, 36°37'70"E	45°22'70"N, 36°38'70"E

249. MEDITERRANEAN SEA - ALGERIA

ILE HABIBAS light in position 35°43'.20N - 001°07'.90W unlit.

254. BLACK SEA - ROMANIA

Oceanographic survey by R/V "MSV NAUTICAL TIDE" until 19 JUN14 in area bounded by:

44°20'.70N - 030°47'.20E
44°03'.00N - 031°09'.60E
44°00'.70N - 031°24'.30E
43°26'.00N - 031°19'.80E
43°21'.60N - 031°06'.40E
43°23'.30N - 030°59'.50E
43°38'.20N - 030°28'.60E
43°40'.60N - 029°50'.30E
43°45'.60N - 029°15'.20E
43°45'.60N - 028°49'.80E
44°20'.80N - 028°49'.30E
44°21'.30N - 029°41'.40E
44°20'.80N - 030°45'.20E
Wide berth requested.

276. STRAIT OF KERCH

Bottom equipment deployed until 15 JUL 14 in following positions,

45°22'60"N, 36°39'06"E
45°21'41"N, 36°40'95"E
45°22'11"N, 36°40'73"E
45°21'22"N, 36°41'00"E
45°21'15"N, 36°37'82"E
45°16'39"N, 36°29'52"E
45°16'94"N, 36°35'29"E

Each device marked by three orange buoys on the surface. 200 meter berth requested.

283. MEDITERRANEAN SEA

1. Operation ACTIVE ENDEAVOUR, from 02 JUN 14 to 06 JUL 14.
2. NATO Units are conducting operation ACTIVE ENDEAVOUR in the Mediterranean Sea to help deter, defend, disrupt and protect against terrorism. If contacted by NATO units, your cooperation and assistance in answering questions would be greatly appreciated. Please report any suspicious activity or information to NATO warships, the NATO shipping centre number 0044 1923 956574, or via email to info@shipping.nato.int.

291. MEDITERRANEAN SEA - TUNISIA

Fish farm established and marked by:

North cardinal buoy : 37°08'.23N, 010°16'.67E

East cardinal buoy : 37°07'.93N, 010°17'.13E

South cardinal buoy: 37°07'.67N, 010°16'.67E

West cardinal buoy : 37°07'.93N, 010°16'.12E

302. MEDITERRANEAN SEA - ALGERIA

Light ROCHER LES DEUX FRERES in position 35°06'.20N, 001°52'.10W unlit.

303. MEDITERRANEAN SEA - ALGERIA

ILOT D'ARZEW Lighthouse in position 35°52'.50N, 000°17'.30W unlit.

321. MEDITERRANEAN SEA - ALGERIA

Light of island TOKIKT in position 36°35'.70N, 001°50'.90E unlit.

325. MEDITERRANEAN SEA - TUNISIA

Geophysical operations till 24 OCT 14, by the ship "FILOMENA PRIMA" in area bounded by.

Parallels 34°05'.40N, 34°09'.60N

Meridians 012°03'.40E, 012°07'.10E

326. BLACK SEA - KERCH STRAIT

Drilling operations by ships "IRBEN" and "SIDON", in circular area 3NM radius centred on 45°18'.66N, 036°30'.31E
The vessels in vicinity are requested to keep a sharp lookout and wide berth to the above mentioned ships.

328. BLACK SEA - RUSSIA

Seismic survey operations by ship "POLAR MARQUIS" until 08 SEP 14, towing 14 streamers of 4 nautical miles length in area bounded by:

43°39' 20"N, 37°49' 40"E

43°49' 60"N, 37°57' 00"E

43°52' 00"N, 38°01' 00"E

43°45' 50"N, 38°18' 20"E

43°47' 20"N, 38°19' 70"E

43°44' 40"N, 38°26' 90"E

43°42' 20"N, 38°27' 10"E

43°37' 10"N, 38°40' 10"E

43°34' 80"N, 38°45' 60"E

43°21' 60"N, 39°08' 60"E

43°17' 00"N, 39°04' 90"E

43°21' 10"N, 38°52' 50"E

43°17' 20"N, 38°49' 30"E

43°13' 50"N, 38°31' 00"E

43°20' 40"N, 38°14' 20"E

43°24' 20"N, 38°12' 20"E

43°29' 10"N, 38°15' 90"E

43°39' 20"N, 37°49' 40"E

Wide berth requested, 5 miles astern and 3 miles abeam and ahead.

334. BLACK SEA - RUSSIA

Gunnery firing exercise, 30 JUN thru 04 JUL 14, from 0500Z to 1300Z, in area bounded by.

45°00'.00N, 036°39'.00E

45°00'.00N, 037°02'.00E

44°40'.00N, 037°24'.00E

44°30'.00N, 036°41'.00E

335. BLACK SEA - UKRAINE

Gunnery firing exercise, 01 thru 05 JUL 14, from 0400Z to 1600Z, in area bounded by.

45°00'.00N, 032°16'.00E
 44°54'.00N, 032°33'.00E
 44°42'.00N, 032°49'.00E
 44°37'.00N, 032°40'.00E
 44°41'.00N, 032°12'.00E
 44°48'.00N, 032°08'.00E

342. BLACK SEA - RUSSIA

Gunnery firing exercise, 02 thru 04 JUL 14, from 0400Z to 1600Z, in area bounded by.

45°03'.50N, 036°17'.00E
 44°57'.50N, 036°23'.00E
 44°45'.00N, 036°24'.00E
 44°45'.00N, 035°50'.00E
 45°00'.00N, 035°50'.00E
 and coastline

Drilling rigs (to the NtM 343/14) :

AREA/Rig Name	Latitude	Longitude
Mediterranean Sea (South/Southeast)		
Unknown	31°24'.10N	30°02'.00E
Unknown	31°24'.50N	30°04'.20E
Sneferu	31°26'.20N	32°58'.00E
P. Fouad	31°30'.90N	32°31'.60E
Atwood Aurora	31°36'.30N	30°04'.70E
Karous	31°37'.80N	32°14'.10E
Key Manhattan	31°39'.50N	32°40'.70E
Mari - B	31°44'.90N	34°18'.30E
Merseak Gardein	31°46'.00N	30°34'.50E
JP Bussel	31°46'.10N	31°20'.60E
Temsah SE-1	31°48'.40N	31°18'.40E
Senefru	31°48'.90N	30°56'.10E
Rosetta-1	31°50'.80N	30°31'.20E
Scarabeo 4	31°52'.12N	32°01'.95E
Ocean Lexington	31°53'.20N	31°53'.40E
El Qaher-1	31°54'.30N	31°54'.00E
El Qaher-2	31°54'.30N	31°54'.00E
Key Singapore	31°55'.20N	31°51'.20E
Adryatic 4	31°55'.50N	32°31'.30E
İsmi bilinmiyor	31°56'.70N	30°09'.20E
Scarabeo 6	32°00'.00N	30°10'.00E
Maersk Discoverer	32°03'.30N	32°18'.70E
DiscovererAmericas	32°15'.50N	28°38'.70E
Atwood Beacon	32°53'.80N	35°01'.10E
Pride North America	33°00'.30N	33°43'.30E
Noble Homer Ferrington	33°01'.10N	33°44'.50E
Estruc. Didon	33°47'.90N	11°53'.50E
Pride Sea Explorer	34°17'.60N	11°48'.40E
Sea Explorer	34°22'.50N	11°32'.00E
7 November	34°23'.00N	12°15'.00E
Isis	34°34'.10N	12°31'.60E
Noble Raul Romano	34°37'.70N	14°40'.40E
Nobel Homer Ferrington	35°46'.20N	14°30'.00E
Sedco Express	35°47'.50N	14°30'.00E
Atwood Southern Cross	35°47'.90N	14°28'.70E
Ensco 5004	35°52'.80N	14°30'.00E
TransOcean Amirente	35°53'.00N	14°30'.90E
Jupiter	36°27'.40N	35°41'.90E

Week: 27/2014

4.4

Adriatic Sea - Jonian Sea

Unknown	40°50'.00N	18°17'.00E
Bonaccia	43°36'.00N	14°21'.20E
Steward	44°12'.80N	12°46'.60E
Morena I	44°13'.60N	12°29'.00E
Annabella	44°13'.70N	13°04'.40E
Ika - A	44°21'.50N	13°29'.30E
Ida - B	44°26'.80N	13°28'.80E
Armida 1	44°28'.50N	12°27'.20E
Unknown	44°30'.00N	13°00'.00E
Irina	44°31'.70N	13°22'.80E
Ivana B	44°41'.20N	13°13'.10E
Vesna	44°41'.20N	13°19'.10E
Ivana E	44°44'.70N	13°14'.80E
Izabela South	44°57'.50N	13°09'.10E
Ocean King	44°58'.50N	13°08'.00E
Izabela North	44°58'.80N	13°07'.80E

Black Sea - Sea of Azov

Deepwater Champion	43°52'.10N	30°45'.60E (NAVIII 306/14)
Unknown	44°03'.40N	30°09'.30E
Unknown	44°31'.60N	29°32'.90E
Unknown	44°32'.70N	29°26'.80E
GSP Uranus	44°34'.10N	29°25'.87E
Prometeu	41°40'.64N	28°38'.48E
Tavrida	45°15'.29N	31°40'.30E
Unknown	45°15'.50N	31°49'.20E
Ukraine	45°21'.33N	30°54'.21E
B-312	45°22'.40N	30°55'.30E
Syvash	45°35'.16N	32°23'.50E
11 Number	45°40'.50N	31°41'.10E
10 Number	45°42'.70N	31°51'.50E
Geolog-1	46°31'.80N	37°01'.10E

SPECIAL WARNING-1

158 TURKISH COAST GUARD Report Line should be reached via the number **+90 312 158 00 00**, in order to avoid drifting of the GSM calls especially made in Aegean Sea and high seas towards other countries call centers.

SPECIAL WARNING-2

The establishment of “**151 FREE EMERGENCY LINE FOR COASTAL SAFETY**” for the aim of announcing the failures of aids to the navigations (lights, buoys) in Turkish Coasts to serve the aids to the navigation in the responsibility of the General Directorate of the Coastal Safety (Ministry of Transport) Department of Aids to the Navigation is announced to the mariners and all the institutions related.

SPECIAL WARNING-3

Following explanations for some of the confusing terms for the users in all levels and law enforcement bodies:

Publication Date : It is the date of the material first published in order to meet navigational requirements in a subject .

New Edition Date: Such changes and amendments to the content occurred that the previous editions are cancelled. New edition date is the date of the publication including those changes and/or amendments and new technical information. (It abolishes the previous prints of the publication)

Reprint Date : It is the date of new print of the current edition made because of the stock shortages and piling of changes/amendments or aging. It incorporates no serious amendments of navigational significance other than those previously promulgated in Notices to Mariners (if any). (The cover design may be renewed) (*)

(*) *The renewal in the cover design does not mean any renewal in the content and previous printings remain in force.*

SPECIAL WARNING-4

Current navigational warnings promulgated by NAVTEX and TRT radio can be reached via the link “Navigational Warnings” in ONHO web site www.shodb.gov.tr.

Entrance to the Maritime Military Forbidden Zones and Maritime Special Security Zones given below is prohibited. (Maritime Special Security Zones can be entered with the permission from the authorities.)

(1) BLACK SEA – Samsun Maritime Military Forbidden Zone

- (a) 41°18'.65N, 36°20'.53E (*Shore*)
- (b) 41°18'.61N, 36°20'.64E
- (c) 41°18'.43N, 36°20'.53E
- (d) 41°18'.47N, 36°20'.41E (*Shore*)

Relevant Charts : TR 1311 (INT 3856)

(2) BLACK SEA – Amasra Maritime Special Security Zone

- (a) 41°44'.61N, 32°23'.78E (*Shore*)
- (b) 41°44'.77N, 32°23'.77E
- (c) 41°44'.83N, 32°23'.65E
- (d) 41°44'.72N, 32°23'.37E (*Shore*)

Relevant Charts : TR 1132

(3) BLACK SEA – K.Ereğli – Maritime Military Security Zone

- (a) 41°17'.32N, 31°23'.77E (*Shore*)
- (b) 41°16'.89N, 31°24'.09E (*Existing breakwater head*)
- (c) 41°17'.35N, 31°24'.60E (*Shore*)

Relevant Charts : TR 1131 (Ereğli, Plan A) – 112 – 113

(4) BLACK SEA – K.Ereğli – Erdemir Special Security Zone

- (a) 41°14'.77N, 31°24'.30E (*Shore*)
- (b) 41°14'.82N, 31°24'.06E
- (c) 41°15'.00N, 31°24'.00E
- (d) 41°15'.70N, 31°24'.10E
- (e) 41°15'.82N, 31°24'.20E
- (f) 41°16'.12N, 31°24'.00E
- (g) 41°16'.37N, 31°24'.00E
- (h) 41°16'.47N, 31°24'.07E
- (i) 41°16'.51N, 31°24'.21E
- (j) 41°16'.37N, 31°24'.62E
- (k) 41°16'.32N, 31°24'.76E
- (l) 41°16'.22N, 31°24'.80E
- (m) 41°16'.24N, 31°25'.10E
- (n) 41°16'.36N, 31°25'.10E
- (o) 41°16'.48N, 31°25'.25E (*Shore*)

Relevant Charts : TR 1131 (Ereğli, Plan A) – 1131

(5) BLACK SEA – Akçakoca – Maritime Special Security Zone

- (a) 41°05'.916N, 31°13'.099E (*Shore*)
- (b) 41°07'.772N, 31°13'.030E
- (c) 41°09'.013N, 31°11'.593E
- (d) 41°10'.285N, 31°13'.422E
- (e) 41°10'.565N, 31°13'.021E
- (f) 41°09'.342N, 31°11'.218E
- (g) 41°12'.795N, 31°08'.662E
- (h) 41°12'.593N, 31°08'.120E
- (i) 41°09'.808N, 31°10'.192E
- (j) 41°10'.114N, 31°06'.024E
- (k) 41°09'.695N, 31°06'.033E
- (l) 41°09'.359N, 31°10'.441E
- (m) 41°07'.606N, 31°12'.460E
- (n) 41°05'.830N, 31°12'.505E (*Shore*)

Relevant Charts : TR 112

Week: 27/2014

(6) BLACK SEA – Bartın – Maritime Military Security Zone

- (a) 41°41'.37N, 32°13'.89E (*Breakwater*)
- (b) 41°41'.25N, 32°13'.91E
- (c) 41°41'.09N, 32°14'.06E (*Shore*)

Relevant Charts : TR 113 (Bartın Port, Plan C)**(7) STRAIT OF İSTANBUL –Umuryeri –Anadolu Kavağı –Anadolu Feneri– Türkeli – Maritime Military Forbidden Zone**

- (a) 41°08'.78N, 29°04'.38E (*Shore*)
- (b) 41°08'.80N, 29°04'.21E
- (c) 41°09'.75N, 29°04'.31E
- (d) 41°10'.04N, 29°04'.44E
- (e) 41°10'.20N, 29°05'.00E
- (f) 41°10'.24N, 29°05'.05E
- (g) 41°10'.41N, 29°05'.21E
- (h) 41°10'.76N, 29°05'.18E
- (i) 41°10'.82N, 29°05'.25E
- (j) 41°10'.95N, 29°05'.64E
- (k) 41°11'.00N, 29°06'.15E
- (l) 41°11'.03N, 29°06'.28E
- (m) 41°11'.37N, 29°06'.82E
- (n) 41°12'.10N, 29°07'.05E
- (o) 41°12'.07N, 29°07'.13E
- (ö) 41°12'.56N, 29°07'.80E
- (p) 41°13'.57N, 29°09'.78E
- (r) 41°13'.56N, 29°10'.42E
- (s) 41°14'.25N, 29°10'.37E
- (ş) 41°14'.23N, 29°12'.79E
- (t) 41°13'.89N, 29°12'.85E (*Shore*)

Relevant Charts : 2921 A – 1811(INT 3758) – 2921(INT 3756) – 181 – 111**(8) STRAIT OF İSTANBUL –Rumelikavağı –Kanlıçınar – Maritime Military Forbidden Zone**

- (a) 41°11'.39N, 29°04'.92E (*Shore*)
- (b) 41°11'.36N, 29°05'.00E
- (c) 41°11'.35N, 29°05'.02E
- (ç) 41°12'.00N, 29°05'.68E
- (d) 41°12'.03N, 29°05'.78E
- (e) 41°12'.41N, 29°06'.46E
- (f) 41°12'.46N, 29°06'.39E
- (g) 41°12'.94N, 29°06'.89E
- (ğ) 41°13'.22N, 29°06'.52E
- (h) 41°14'.13N, 29°07'.23E
- (i) 41°14'.83N, 29°05'.66E
- (i) 41°14'.77N, 29°05'.67E (*Shore*)

Relevant Charts : TR 2921 A – 1811(INT 3758) – 2921(INT 3756) – 181 – 111**(9) SEA OF MARMARA – Marmara Ereğlisi – Örencik Rock - Maritime Military Security Zone**

- (a) 40°58'.09N, 27°52'.91E
- (b) 40°57'.84N, 27°52'.90E
- (c) 40°57'.76N, 27°53'.43E
- (d) 40°57'.93N, 27°54'.12E
- (e) 40°58'.20N, 27°54'.12E

Relevant Charts : TR 293

SPECIAL WARNINGS FOR MARINERS**PART 5****(10) SEA OF MARMARA – Fenerbahçe D/G Station – Maritime Military Forbidden Zone(WGS84 DATUMU)**

- (a) 40°58'.07N, 29°01'.93E
- (b) 40°57'.98N, 29°01'.98E
- (c) 40°57'.85N, 29°01'.95E
- (d) 40°57'.85N, 29°01'.38E
- (e) 40°58'.24N, 29°01'.38E
- (f) 40°58'.24N, 29°01'.79E

Relevant Charts : TR 2925 – 2923 (INT 3754) – 2921 B – 292

(11) SEA OF MARMARA - Pendik - İstanbul Shipyard Maritime Military Security Zone

- (a) 40°52'06"N, 29°15'16"E (*Shore*)
- (b) 40°51'33"N, 29°14'56"E
- (c) 40°51'15"N, 29°15'16"E
- (d) 40°51'06"N, 29°15'55"E
- (e) 40°51'18"N, 29°16'14"E
- (f) 40°51'25"N, 29°16'04"E (*Shore*)

Relevant : TR 2923 (INT 3754) – 2919 – 291 – 292

(12) SEA OF MARMARA – Tuzla – Maritime Military Security Zone

- (a) 40°49'.09N, 29°16'.17E (*Shore*)
- (b) 40°49'.20N, 29°16'.03E
- (c) 40°49'.20N, 29°15'.81E
- (d) 40°48'.93N, 29°15'.50E
- (e) 40°48'.96N, 29°15'.29E
- (f) 40°48'.85N, 29°15'.29E
- (g) 40°48'.60N, 29°15'.46E
- (h) 40°48'.49N, 29°15'.52E
- (i) 40°48'.37N, 29°15'.43E
- (j) 40°48'.31N, 29°15'.41E
- (k) 40°48'.17N, 29°15'.41E
- (l) 40°48'.30N, 29°15'.85E
- (m) 40°48'.62N, 29°15'.96E
- (n) 40°48'.66N, 29°15'.89E
- (o) 40°48'.72N, 29°15'.98E
- (p) 40°48'.77N, 29°16'.14E (*Shore*)

Relevant Charts : TR 2923 (INT 3754) – 2919 – 291 – 292

(13) SEA OF MARMARA – Körfez Special Security Zone

- (a) 40°45'59"N, 29°44'45"E
- (b) 40°46'00"N, 29°44'35"E
- (c) 40°45'58"N, 29°44'08"E
- (d) 40°45'56"N, 29°43'44"E
- (e) 40°45'47"N, 29°43'48"E
- (f) 40°45'43"N, 29°44'05"E
- (g) 40°45'35"N, 29°44'18"E
- (h) 40°45'26"N, 29°44'26"E
- (i) 40°44'25"N, 29°47'09"E
- (j) 40°44'15"N, 29°47'10"E
- (k) 40°44'15"N, 29°46'36"E
- (l) 40°44'21"N, 29°45'51"E
- (m) 40°44'27"N, 29°45'10"E
- (n) 40°44'57"N, 29°44'45"E
- (o) 40°44'10"N, 29°44'36"E
- (p) 40°44'26"N, 29°47'02"E

Relevant Charts : TR2911 – 291

(14) SEA OF MARMARA – Bay of İzmit – Baş İskele - Maritime Military Security Zone

- (a) 40°43'.05N, 29°55'.57E (*Shore*)
- (b) 40°43'.22N, 29°55'.46E
- (c) 40°43'.53N, 29°56'.10E
- (d) 40°43'.27N, 29°56'.26E (*Shore*)

Relevant Charts : TR 2911 – 291**(15) SEA OF MARMARA** – Bay of İzmit – Gölcük Maritime Military Forbidden Zone

- (a) 40°43'42"N, 29°47'59"E (*Shore*)
- (b) 40°44'19"N, 29°48'31"E
- (c) 40°44'27"N, 29°49'22"E
- (d) 40°44'13"N, 29°49'55"E
- (e) 40°43'20"N, 29°49'54"E (*Shore*)

Relevant Charts : TR 2911 – 291**(16) SEA OF MARMARA** – Bay of İzmit– Konca Maritime Military Forbidden Zone

- (a) 40°42'34"N, 29°42'29"E (*Shore*)
- (b) 40°42'49"N, 29°42'29"E
- (c) 40°42'58"N, 29°42'54"E
- (d) 40°42'56"N, 29°43'52"E
- (e) 40°42'47"N, 29°43'52"E (*Shore*)

Relevant Chart : TR 291**(17) SEA OF MARMARA** – Bay of İzmit – Dil Point Maritime Military Forbidden Zone

- (a) 40°44'39"N, 29°30'50"E (*Shore*)
- (b) 40°44'37"N, 29°31'45"E
- (c) 40°44'12"N, 29°31'45"E
- (d) 40°44'23"N, 29°30'45"E (*Shore*)

Relevant Chart : TR 291**(18) SEA OF MARMARA** – Yalova – Maritime Military Security Zone

- (a) 40°39'.98N, 29°18'.09E (*Shore*)
- (b) 40°40'.05N, 29°18'.08E
- (c) 40°40'.06N, 29°18'.18E
- (d) 40°40'.01N, 29°18'.20E (*Shore*)

Relevant Chart : TR 291**(19) SEA OF MARMARA** – İmralı Island– Maritime Military Forbidden Zone

- (a) 40°28'00"N, 28°27'00"E
- (b) 40°37'00"N, 28°27'00"E
- (c) 40°37'00"N, 28°37'00"E
- (d) 40°28'00"N, 28°37'00"E

Relevant Chart : TR 2924 (İmralı Island, Plan A) – 294 – 292 – 293 – 29 (INT 3708)**(20) SEA OF MARMARA** – Erdek Bay – Erdek Maritime Military Forbidden Zone

- (a) 40°23'58"N, 27°49'00"E (*Shore*)
- (b) 40°23'04"N, 27°49'00"E
- (c) 40°23'04"N, 27°48'04"E (*Shore*)

Relevant Chart : TR 2941 (Plan B) – 2941 (Plan A) – 296 – 294

(21) STRAIT OF ÇANAkkALE – Umurbey – Maritime Military Security Zone

- (a) 40°15'19"N, 26°33'16"E
- (b) 40°15'58"N, 26°33'13"E
- (c) 40°16'07"N, 26°33'33"E
- (d) 40°15'58"N, 26°33'59"E

Relevant Charts : TR 212 - 2124**(22) STRAIT OF ÇANAkkALE – Nara – Maritime Military Security Zone**

- (a) 40°09'.43N, 26°24'.58E (*Shore*)
- (b) 40°09'.40N, 26°24'.51E
- (c) 40°09'.83N, 26°24'.11E
- (d) 40°10'.57N, 26°24'.05E
- (e) 40°10'.91N, 26°24'.21E
- (f) 40°11'.30N, 26°24'.25E
- (g) 40°11'.58N, 26°24'.28E
- (h) 40°11'.81N, 26°23'.96E
- (i) 40°11'.90N, 26°24'.03E
- (j) 40°12'.15N, 26°24'.90E
- (k) 40°12'.05N, 26°25'.20E
- (l) 40°11'.90N, 26°25'.41E
- (m) 40°11'.87N, 26°25'.37E (*Shore*)

Relevant Chart : TR 212 (INT 3750) – 2122 - 2123**(23) STRAIT OF ÇANAkkALE – Kumkale – Maritime Military Forbidden Zone**

- (a) 40°00'20"N, 26°11'38"E (*Shore*)
- (b) 40°00'27"N, 26°10'48"E
- (c) 40°01'00"N, 26°12'12"E
- (d) 40°00'58"N, 26°12'21"E
- (e) 40°00'36"N, 26°12'22"E (*Shore*)

Relevant Charts : TR 212 (INT 3750) – 2121 - 2134 – 213**(24) STRAIT OF ÇANAkkALE – Çankaya Point – Maritime Military Forbidden Zone**

- (a) 40°25'.84N, 26°41'.70E (*Shore*)
- (b) 40°25'.86N, 26°41'.79E
- (c) 40°25'.22N, 26°42'.05E
- (d) 40°25'.15N, 26°41'.99E
- (e) 40°25'.12N, 26°41'.42E
- (f) 40°25'.00N, 26°41'.16E
- (g) 40°25'.02N, 26°40'.84E (*Shore*)

Relevant Charts : TR 2124**(25) SEA OF MARMARA – Marmara Ereğlisi – BOTAŞ Maritime Special Security Zone**

- (a) 40°59'.23N, 27°58'.82E (*Shore*)
- (b) 40°59'.30N, 27°59'.32E
- (c) 40°59'.52N, 27°59'.50E
- (d) 40°59'.70N, 27°59'.52E
- (e) 40°59'.87N, 27°59'.42E
- (f) 41°00'.25N, 27°59'.00E (*Shore*)

Relevant Charts : TR 2931 (Marmara Ereğlisi, Plan B) – 293**(26) SEA OF MARMARA – Silivri – Maritime Special Security Zone**

- (a) 41°04'30"N, 28°11'06"E (*Shore*)
- (b) 41°02'54"N, 28°10'48"E
- (c) 41°03'00"N, 28°11'18"E
- (d) 41°02'24"N, 28°11'45"E (*Shore*)

Relevant Charts : TR 293 – 29 (INT 3708)

(27) AEGEAN SEA – Çandarlı Bay – Aliğa Special Security Zone

- (a) 38°49'57"N, 26°56'12"E (*Shore*)
- (b) 38°50'04"N, 26°56'06"E
- (c) 38°50'16"N, 26°56'02"E
- (d) 38°50'24"N, 26°56'24"E
- (e) 38°50'25"N, 26°56'52"E
- (f) 38°50'18"N, 26°56'57"E
- (g) 38°50'18"N, 26°57'09"E
- (h) 38°50'13"N, 26°57'16"E
- (i) 38°49'52"N, 26°57'17"E
- (j) 38°49'41"N, 26°57'09"E
- (k) 38°49'21"N, 26°57'04"E
- (l) 38°49'00"N, 26°56'52"E
- (m) 38°48'53"N, 26°56'53"E
- (n) 38°48'46"N, 26°57'14"E
- (o) 38°48'49"N, 26°57'27"E
- (p) 38°48'40"N, 26°57'43"E
- (r) 38°48'17"N, 26°57'46"E (*Shore*)

Relevant Charts : TR 2150- 2147**(28) AEGEAN SEA – Aliğa PETKİM Special Security Zone**

- (a) 38°46'.64N, 26°55'.92E (*Shore*)
- (b) 38°46'.62N, 26°55'.54E
- (c) 38°47'.05N, 26°54'.91E
- (d) 38°47'.36N, 26°54'.70E
- (e) 38°48'.40N, 26°53'.78E
- (f) 38°49'.13N, 26°53'.14E
- (g) 38°49'.51N, 26°53'.14E
- (h) 38°49'.73N, 26°53'.46E
- (i) 38°49'.81N, 26°53'.66E
- (k) 38°49'.80N, 26°53'.89E
- (l) 38°49'.49N, 26°54'.32E
- (m) 38°49'.32N, 26°54'.82E
- (n) 38°49'.13N, 26°54'.94E (*Shore*)

İlgili Haritalar : TR 2147- 2148**(29) İZMİR BAY – Leventler Harbour Maritime Military Forbidden Zone**

- (a) 38°39'.90N, 26°44'.53E (*Shore*)
- (b) 38°40'.10N, 26°44'.30E
- (c) 38°40'.20N, 26°44'.00E
- (d) 38°39'.50N, 26°43'.13E
- (e) 38°39'.20N, 26°43'.10E
- (f) 38°36'.83N, 26°45'.32E
- (g) 38°36'.65N, 26°46'.50E
- (h) 38°36'.90N, 26°47'.23E (*Shore*)

Relevant Charts : TR 2149 – 2211 – 221 (INT 3784) – 22

(30) İZMİR BAY – Uzunada Maritime Military Forbidden Zone

- (a) 38°27'.40N, 26°42'.81E
- (b) 38°27'.32N, 26°43'.50E
- (c) 38°27'.33N, 26°44'.57E
- (ç) 38°27'.90N, 26°45'.35E
- (d) 38°28'.20N, 26°45'.52E
- (e) 38°29'.06N, 26°45'.52E
- (f) 38°29'.98N, 26°44'.97E
- (g) 38°31'.41N, 26°44'.58E
- (h) 38°31'.95N, 26°44'.53E
- (i) 38°32'.49N, 26°43'.91E
- (ı) 38°33'.16N, 26°42'.79E
- (j) 38°33'.32N, 26°41'.41E
- (k) 38°31'.94N, 26°41'.13E
- (l) 38°29'.78N, 26°40'.89E
- (m) 38°28'.52N, 26°41'.17E

Relevant Charts : TR 2211 – 2213 – 2214 – 2215 – 221 (INT 3784)

(31) İZMİR BAY – Menteş Maritime Military Forbidden Zone

- (a) 38°24'22"N, 26°41'11"E (*Shore*)
- (b) 38°24'19"N, 26°41'01"E
- (c) 38°24'32"N, 26°40'50"E
- (d) 38°25'01"N, 26°40'49"E
- (e) 38°26'21"N, 26°42'24"E
- (f) 38°26'25"N, 26°43'00"E
- (g) 38°26'24"N, 26°43'29"E
- (h) 38°26'23"N, 26°43'42"E
- (i) 38°26'03"N, 26°44'13"E
- (k) 38°25'31"N, 26°44'39"E
- (l) 38°24'49"N, 26°44'28"E
- (m) 38°24'46"N, 26°44'17"E (*Shore*)

Relevant Charts : TR 2213 – 2214 – 221 (INT 3784)

(32) İZMİR BAY – Naldöken Maritime Military Security Zone

- (a) 38°27'.93N, 27°08'.38E (*Shore*)
- (b) 38°27'.78N, 27°08'.40E
- (c) 38°27'.72N, 27°08'.35E
- (d) 38°27'.62N, 27°08'.12E
- (e) 38°27'.55N, 27°08'.08E
- (f) 38°27'.48N, 27°07'.88E
- (g) 38°27'.53N, 27°07'.58E (*Shore*)

Relevant Charts : TR 2212 (INT 3785) – 221 (INT 3784)

(33) AEGEAN SEA – İzmir – Naldöken SG Maritime Military Security Zone

- (a) 38°28'.10N, 27°09'.46E (*Shore*)
- (b) 38°28'.09N, 27°09'.42E
- (c) 38°28'.04N, 27°09'.40E
- (d) 38°28'.04N, 27°09'.36E
- (e) 38°28'.10N, 27°09'.35E (*Shore*)

Relevant Chart : TR 2212 (INT 3785)

(34) İZMİR BAY – Yenikale Maritime Military Security Zone

- (a) 38°24'.89N, 27°00'.97E (*Shore*)
- (b) 38°24'.92N, 27°00'.83E
- (c) 38°25'.03N, 27°00'.95E
- (d) 38°25'.15N, 27°00'.92E
- (e) 38°25'.28N, 27°01'.02E
- (f) 38°25'.22N, 27°01'.18E
- (g) 38°25'.05N, 27°01'.40E
- (h) 38°24'.94N, 27°01'.28E (*Shore*)

Relevant Charts : TR 2212 (INT 3785) – 221 (INT 3784)

(35) AEGEAN SEA – Gerence Bay Maritime Military Forbidden Zone

- (a) 38°28'.80N, 26°24'.30E (*Shore*)
- (b) 38°29'.80N, 26°20'.00E
- (c) 38°23'.70N, 26°15'.83E
- (d) 38°23'.70N, 26°24'.00E
- (e) 38°26'.63N, 26°27'.60E
- (f) 38°28'.28N, 26°27'.00E (*Shore*)

Relevant Charts: TR 2224 – 2223 – 221(INT 3784) – 222 – 22B

(36) AEGEAN SEA – Uçburnu Maritime Military Forbidden Zone

- (a) 38°22'40"N, 26°17'03"E (*Shore*)
- (b) 38°22'56"N, 26°16'82"E
- (c) 38°22'62"N, 26°16'83"E
- (d) 38°22'87"N, 26°17'12"E
- (e) 38°22'63"N, 26°17'43"E
- (f) 38°22'57"N, 26°17'44"E
- (g) 38°22'38"N, 26°17'21"E (*Shore*)

Relevant Charts : TR 2223

(37) AEGEAN SEA – Akbük Maritime Military Forbidden Zone

- (a) 37°22'20"N, 27°19'21"E (*Shore*)
- (b) 37°22'07"N, 27°19'34"E
- (c) 37°21'44"N, 27°19'34"E
- (d) 37°21'43"N, 27°19'13"E (*Shore*)

Relevant Charts : TR 2245

(38) MEDITERRANEAN SEA – Marmaris Karaağaç Harbour - Aksaz Maritime Military Forbidden Zone

Between the northern side of the line joining 36°48'48"N, 28°27'42"E Gökyar Cape and 36°47'24"N, 28°24'24"E Turnalı Cape and the shore.

Relevant Chart : TR 312

(39) MEDITERRANEAN SEA – Antalya Maritime Military Security Zone

- (a) 36°49'42"N, 30°36'08"E (*Shore*)
- (b) 36°49'34"N, 30°36'27"E
- (c) 36°49'50"N, 30°36'44"E (*Breakwater*)
- (d) 36°49'53"N, 30°36'33"E (*Quay head*)
- (e) 36°49'55"N, 30°36'22"E (*Quay*)

Relevant Charts : TR 3221 (INT 3653) (Plan A) & 3221 (INT 3653) – 3222 (INT 3652) – 322 (INT 3651)

(40) MEDITERRANEAN SEA – Mersin Military Port – Maritime Military Security Zone

- (a) 36°47'.13N, 34°37'.22E (*Shore*)
- (b) 36°47'.09N, 34°37'.26E
- (c) 36°47'.19N, 34°37'.35E
- (d) 36°47'.21N, 34°37'.38E (*Shore*)

Relevant Charts : TR 3331 (INT 3657)

(41) MEDITERRANEAN SEA – Mersin Military Port – Maritime Military Security Zone

- (a) 36°48'21"N, 34°39'11"E (*Quay Corner*)
- (b) 36°48'20"N, 34°39'20"E (*Quay Corner*)
- (c) 36°48'30"N, 34°39'19"E
- (d) 36°48'30"N, 34°39'32"E

Relevant Charts : TR 3331 (INT 3657) – 333 (INT 3656)

(42) MEDITERRANEAN SEA – Mersin – Akkuyu Special Security Zone

- (a) 36°07'29"N, 33°33'48"E
- (b) 36°07'27"N, 33°33'40"E
- (c) 36°08'15"N, 33°34'23"E
- (ç) 36°08'06"N, 33°34'12"E
- (d) 36°07'52"N, 33°34'11"E
- (e) 36°07'46"N, 33°34'06"E
- (e) 36°07'39"N, 33°33'57"E
- (f) 36°08'44"N, 33°33'46"E
- (g) 36°08'28"N, 33°34'37"E
- (ğ) 36°08'25"N, 33°34'27"E
- (h) 36°09'18"N, 33°34'25"E
- (i) 36°09'00"N, 33°34'44"E
- (i) 36°07'33"N, 33°34'57"E
- (j) 36°07'25"N, 33°32'10"E
- (k) 36°07'24"N, 33°33'20"E
- (l) 36°07'28"N, 33°33'31"E
- (m) 36°07'30"N, 33°33'08"E
- (n) 36°07'24"N, 33°32'18"E
- (o) 36°07'25"N, 33°32'34"E
- (ö) 36°07'47"N, 33°32'56"E
- (p) 36°08'18"N, 33°31'56"E
- (r) 36°08'20"N, 33°31'06"E
- (s) 36°08'14"N, 33°32'59"E
- (ş) 36°08'08"N, 33°31'57"E
- (t) 36°08'19"N, 33°31'32"E
- (u) 36°08'18"N, 33°31'40"E
- (ü) 36°08'28"N, 33°31'07"E
- (v) 36°08'30"N, 33°31'16"E
- (y) 36°08'29"N, 33°31'23"E
- (z) 36°08'22"N, 33°31'27"E
- (aa) 36°08'45"N, 33°31'01"E
- (ab) 36°08'43"N, 33°30'58"E
- (ac) 36°08'33"N, 33°30'53"E

Relevant Charts : TR 331

(43) MEDITERRANEAN SEA – Bay of İskenderun – Suğözü (İSKEN) Maritime Special Security Zone

- (a) 36°50'.391N, 35°53'.423E (*Shore*)
- (b) 36°50'.334N, 35°53'.424E
- (c) 36°50'.267N, 35°53'.710E
- (d) 36°50'.091N, 35°53'.682E
- (e) 36°49'.991N, 35°53'.879E
- (f) 36°49'.918N, 35°53'.952E
- (g) 36°49'.854N, 35°53'.975E
- (h) 36°49'.788N, 35°53'.978E
- (i) 36°49'.730N, 35°53'.955E
- (j) 36°49'.694N, 35°53'.930E
- (k) 36°49'.647N, 35°53'.870E
- (l) 36°49'.599N, 35°53'.701E
- (m) 36°49'.612N, 35°53'.608E
- (n) 36°49'.777N, 35°53'.266E
- (o) 36°49'.715N, 35°52'.978E
- (p) 36°49'.723N, 35°52'.911E
- (r) 36°49'.629N, 35°52'.668E
- (s) 36°49'.672N, 35°52'.503E
- (t) 36°49'.664N, 35°52'.470E (*Shore*)

Relevant Charts : TR 3343 – 334 (INT 3660)

(44) MEDITERRANEAN SEA – Bay of İskenderun – BOTAŞ (Ceyhan) Maritime Special Security Zone

- (a) 36°52' 03"N, 35°54' 53"E (*Shore*)
- (b) 36°51' 39"N, 35°55' 20"E
- (c) 36°50' 50"N, 35°54' 40"E
- (d) 36°50' 06"N, 35°55' 13"E
- (e) 36°49' 59"N, 35°56' 22"E
- (f) 36°51' 30"N, 35°58' 30"E
- (g) 36°53' 24"N, 35°56' 42"E (*Shore*)

Relevant Charts : TR 3343 – 334 (INT 3660) – 33 (INT 3602)

(45) MEDITERRANEAN SEA – Bay of İskenderun – BOTAŞ (Dörtyol) Maritime Special Security Zone

- (a) 36°52' 12.166"N, 36°08' 00.520"E (*Shore*)
- (b) 36°51' 34.852"N, 36°07' 06.363"E
- (c) 36°50' 45.266"N, 36°07' 57.771"E
- (d) 36°51' 23.143"N, 36°08' 53.146"E (*Shore*)

Relevant Charts : TR 3343 – 334 (INT 3660) – 33 (INT 3602)

(46) MEDITERRANEAN SEA – Bay of İskenderun – İSDEMİR Maritime Special Security Zone

- (a) 36°45' 13.880"N, 36°11' 31.064"E (*Shore*)
- (b) 36°45' 11.360"N, 36°11' 21.927"E
- (c) 36°44' 39.862"N, 36°11' 20.658"E
- (d) 36°44' 04.083"N, 36°11' 30.428"E
- (e) 36°43' 50.575"N, 36°11' 07.947"E
- (f) 36°43' 23.919"N, 36°10' 51.995"E
- (g) 36°43' 09.789"N, 36°11' 51.852"E (*Shore*)

Relevant Charts : TR 3344 (İSDEMİR Port, Plan A) – 3342 – 334 (INT 3660)

(47) MEDITERRANEAN SEA – İskenderun Sariseki Maritime Military Security Zone

- (a) 36°39'28"N, 36°12'49"E (*Shore*)
- (b) 36°39'26"N, 36°12'26"E
- (c) 36°39'30"N, 36°12'17"E
- (d) 36°39'37"N, 36°12'19"E
- (e) 36°39'43"N, 36°12'55"E (*Shore*)

Relevant Charts : TR 3342 (INT 3661) – 334 (INT 3660)

(48) MEDITERRANEAN SEA – İskenderun Naval Base Command Maritime Military Security Zone

- (a) 36°35'.246N, 36°08'.512E (*Shore*)
- (b) 36°35'.293N, 36°08'.479E
- (c) 36°35'.410N, 36°08'.681E
- (d) 36°35'.387N, 36°08'.704E

Relevant Charts : TR 334 (INT 3660) (Uluçınar Plan) & 334 (INT 3660) – 335

(49) MEDITERRANEAN SEA – İskenderun Uluçınar Maritime Military Security Zone

- (a) 36°24'53"N, 35°53'09"E (*Shore*)
- (b) 36°25'04"N, 35°53'09"E
- (c) 36°25'08"N, 35°52'52"E
- (d) 36°25'05"N, 35°52'45"E
- (e) 36°24'44"N, 35°52'29"E
- (f) 36°24'41"N, 35°52'32"E (*Shore*)

Relevant Charts : TR 334 (INT 3660) (Uluçınar Plan) & 334 (INT 3660) – 335

(1) ONHO WEB SITE

Weekly Notices to Mariners Bulletin can be viewed in Acrobat Reader on ONHO web-site <http://www.shoddb.gov.tr>. In any disagreement or incompatibility, Turkish text is valid.

(2) ONHO TRT – TELETEXT BROADCASTING

Teletext page for the promulgation of aids to the navigation out of service is available under the title "AIDS TO THE NAVIGATION OUT OF ORDER" in TRT Teletext page 193.

(3) ONHO NOTICES TO MARINERS CUMULATIVE LIST

"CUMULATIVE LIST" showing the list of Notices to Mariners affecting Turkish Charts since 2000 is available in our web site.

(4) NAVTEX BROADCASTS

Directorate General of the Coastal Safety makes NAVTEX broadcasting in order to conform the marine communication service to GDMSS on frequencies of 490 KHz and 4209.5 KHz in Turkish and 518 KHz in English in below periods.

For 490 KHz. ;	BROADCAST CODE	BROADCAST TIME (UTC)					
SAMSUN	A	00.00	04.00	08.00	12.00	16.00	20.00
İSTANBUL	B	00.10	04.10	08.10	12.10	16.10	20.10
İZMİR	C	00.20	04.20	08.20	12.20	16.20	20.20
ANTALYA	D	00.30	04.30	08.30	12.30	16.30	20.30
For 4209.5 KHz. ;							
İSTANBUL	M	02.00	06.00	10.00	14.00	18.00	22.00
For 518 KHz. ;							
İSTANBUL	D	00.30	04.30	08.30	12.30	16.30	20.30
SAMSUN	E	00.40	04.40	08.40	12.40	16.40	20.40
ANTALYA	F	00.50	04.50	08.50	12.50	16.50	20.50
İZMİR	I	01.20	05.20	09.20	13.20	17.20	21.20

(5) DGPS BROADCASTS

The data related to DGPS Stations established in the Straits of İstanbul and Çanakkale in the scope of Turkish Straits Vessel Traffic Service (TSVTS) and started broadcasting are presented below.

STATION INFORMATION	THE STRAIT OF İSTANBUL	THE STRAIT OF ÇANAKKALE
(A) Station Name	: Rumeli Feneri	Kumkale
(B) Transmitter ID No.	: 373	374
(C) Reference ID No.	: 545 / 546	547 / 548
(Ç) Station Position	: 41°14'.19K, 29°06'.46D	39°59'.37K, 26°10'.84D
(D) Range	: 160 Miles	160 Miles
(E) Type	: RTCM	RTCM
(F) Frequency	: 301 KHZ	307.5 KHZ
(G) Datum	: WGS - 84	WGS - 84

HYDROGRAPHIC MEMORANDUM

1. *The following issues affecting safety at sea and navigation should be notified to the Office of Navigation, Hydrography and Oceanography according to the Navigation and Hydrography Services law numbered 1738 published in the Official Gazette dated June 07, 1973 and numbered 14557. All mariners are requested to cooperate in this activity for the safety of life and property.*

a. *Changes, additions and discrepancies between published items and the conditions actually observed. (For example new wharf, pier, mole, sea filling, wreck, outfall and intake, new lighthouse, buoy establishment, sweeping, fisherman shelter, marina, pool, pontoon, harbour launch, dolphin, marine farm etc.)*

b. *Changes of depth determined /reported within the limits of the harbour.*

c. *Differences between the coast view in approaches to the port and the charts and guide books.*

d. *Shape and colour discrepancies between the actual beacon and mooring buoys and the ones in the charts and nautical publications.*

e. *Discrepancies between the beacon buoys, lights and fog signals and the charts and nautical publications*

f. *Dangerous floating objects.*

g. *Other issues necessary to be reported.*

2. *The largest scale chart should be used and a sketch (if possible) should be forwarded while reporting the issues above.*

3. *The brand mark and model of the echo sounder equipment used while fixing the changes of depths need to be indicated and the sounding paper need to be forwarded.*

4. *The datum of the coordinate (ED50, WGS84, PULKOVO 1942 etc) need to be indicated when notifying the coordinates of the discrepancies for the precision.*

TN-ONHO

General location of the data constituting the basis for the memorandum :

Type of information :

Coordinates :N.....E.
and DATUM DATUM (WGS84, ED50 etc)

Turkish Charts Affected :

Explanations :

TURKISH NAVY OFFICE OF NAVIGATION, HYDROGRAPHY AND OCEANOGRAPHY

34805 ÇUBUKLU/İSTANBUL

