



**Smart Design.** The Staber washer is the only top load horizontal-axis washer made in the U.S. It features a patented tub design that can clean more effectively than circular tubs.



Top view of six-sided inner tub and automatic prewash, detergent, bleach, and softener dispenser.

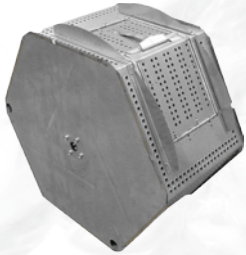


Clothes are cleaner with Staber.

Tim in WI

I can't get over how much cleaner our clothes are!

Diane in NJ



- 
- Instead of fabric being submerged in a tub of water and twisted back-and-forth like traditional washers, the Staber washer gently tumbles like a front loader but improves wash performance by using a patented tub design. As the six-sided perforated inner tub rotates inside a stationary half of an eight-sided outer tub, water is pushed through the holes of the inner tub. This creates a gentle pumping action in the water which can clean more effectively and efficiently than circular tubs, using less water, energy, and detergent.
- 
- cleans up to 50% more laundry than traditional washers
- 
- uses an average of only 15 gallons of water per load – 30 gallons less than traditional washers
- 
- automatic prewash, detergent, bleach and softener dispenser
- 

Fire stations, nursing homes, bed & breakfasts, dry cleaners, salons, and many residential homes across the country depend on Staber's unique design to get their clothes cleaner.

Smart savings. Do you know how much water your washer uses in every load? We do.

I've found that I can basically double the amount of clothes I was doing in my old washer.

Bob in MO

I use less water, less fabric softener, and have hardly used any soap...

Tom in CA

My colors look brighter already, my whites are whiter, and I still have a hard time believing it does it on one ounce of detergent and bleach.

Thelma in AZ



---

Traditional washers use up to 50 gallons per load (up to 15 lbs/approx. 13 bath towels)

---



---

Staber washers use up to 16.5 gallons per load (up to 18 lbs/approx. 16 bath towels)

---



On average, the Staber washer costs around \$0.40 per load, while other traditional top load washers cost around \$1.20 per load. If you wash eight loads every week, you could save over \$300 every year with a Staber washer.

**Less is more.** We set out to build a better washer that cleans more clothes smarter with less water than any other brand, because we know less water saves you money.

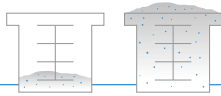
It really is unbelievable how much water and soap we save.

Suzi in CA

Since I've been using your machine, all my clothes have come out clean even when I wash them in cold water, and the clothes are so dry when removed from the washer that it's cut my drying time in half.

Karen in NC





- less water means less detergent – 1 ounce versus 4-8 ounces for traditional washers
- less water means lower water bills
- less water means lower electric/gas bills heating your hot water
- less water means less salt for softener systems
- less water means less stress on well and septic systems



We also know that wet clothes take longer to dry, which costs money. Our high speed spin cycle extracts more water so your dryer doesn't have to, resulting in lower electric/gas bills, quicker drying time and less wear and tear to fabrics.

Built to last. We wanted a product that is not only excellent at what it does, but also reliable.

- 1 patented stainless steel inner and outer tubs as opposed to plastic or porcelain
  - 2 reversible, variable-speed motor – eliminates the need for a transmission
  - 3 maintenance free self-cleaning water pump
  - 4 two sealed front and rear heavy-duty bearings per shaft
  - 5 heavy-duty four strut suspension
  - 6 high impact ABS resin top and lid resists rust and dents
  - 7 simple mechanical switches as opposed to expensive, electronic push-button controls
- parts warranted for commercial use





## Staber is better than a front load washer. Why?

- simplified controls for easier use
- top loading convenience so you do not have to stoop over to load/unload or purchase expensive pedestals
- shorter cycle time
- immediate access to the tub while washing instead of being locked
- no front door gasket; eliminates future leaking problems and mildew
- two bearings on each side of the tubs for balanced support and better long-term durability, as opposed to just one bearing on the back of the tub
- complete front access to parts; saves on maintenance costs



Most washer mechanical failures are due to a failing transmission, which is why we built our washer without one. Even though our washers have impeccable service records, parts do fail over time. Our washers are not only simple to use, but simple to repair, even if you aren't mechanically inclined. And if you have a hard time finding the problem you can always ask us, the manufacturer.

# Staber Washer



Made in the U.S.A.



**Dimensions:** 27" W x 26" D x 42" H (55" height with lid up)

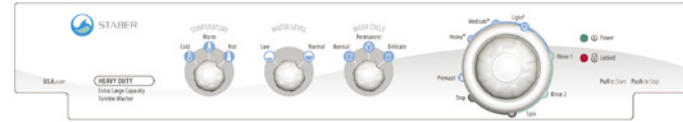
**Weight:** Net 175 lbs (240 lbs shipping weight)

**Stainless steel tub capacity:** 2 cu. ft. (all usable tub volume)

**Detergent use per normal load:** 1 ounce average

**Watts of electricity per load:** 110-160 watt hours

One year full warranty; five year limited warranty (bearing assembly and suspension system); twenty-five year limited warranty (stainless steel outer tub module) See owner's manual for complete warranty.



## Time breakdown per maximum load

Prewash: 5 minutes + fill time

Wash: up to 15 minutes + fill time

Rinse: two 5 minute rinses + fill time

Spin: 5 minutes

Decake/Index Time: 3 minutes

## Average water use per load

Normal level: up to 16.5 gallons

Low level: up to 12 gallons

Pre-wash + wash: up to 22 gallons

## Normal hot and cold water usage

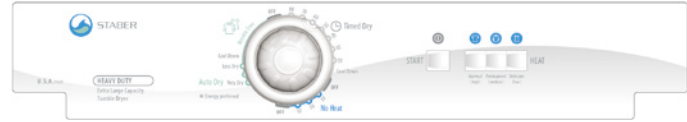
Water Level/Temperature	Hot	Cold
Normal/Hot	up to 5.5 gallons	up to 11 gallons
Normal/Warm	up to 2.7 gallons	up to 13.7 gallons
Normal/Cold		up to 16.5 gallons

As an ENERGY STAR® partner, Staber Industries has determined that it's Staber washers meet the ENERGY STAR® guidelines for energy efficiency. Staber Industries has a policy of continuous improvement of it's products and reserves the right to change materials and specifications without notice.

# Staber Dryer

**Dimensions:** 29" W x 27 13/16" D x 42" H

**Weight:** Net 120 lbs (130 lbs shipping weight)



- large 7.0 cubic feet capacity drum allows for clothes to tumble and spread saving drying time
- three cycles: timed dry, no heat, automatic dry
- balanced air flow system circulating air throughout the drum to help equalize drying temperatures and control linting
- 99 square inch surface area, top-mounted metal lint screen maximizes air flow for efficient drying
- reversible wide-opening side-swing door
- polyester/enamel top finish
- 1/3 hp motor with built-in overload protector
- push-button controls with rotary cycle selector
- one year full warranty; three year limited parts (see owner's manual for complete warranty)

