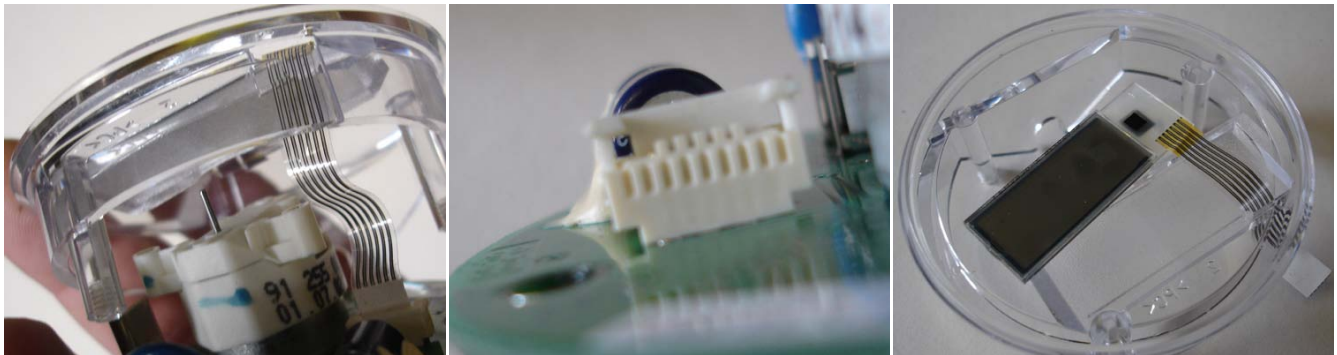


The LCD is a Curtis Instruments module 701 PN0010-1248D2060A (Part No: 1707521)  
Cost about £15.

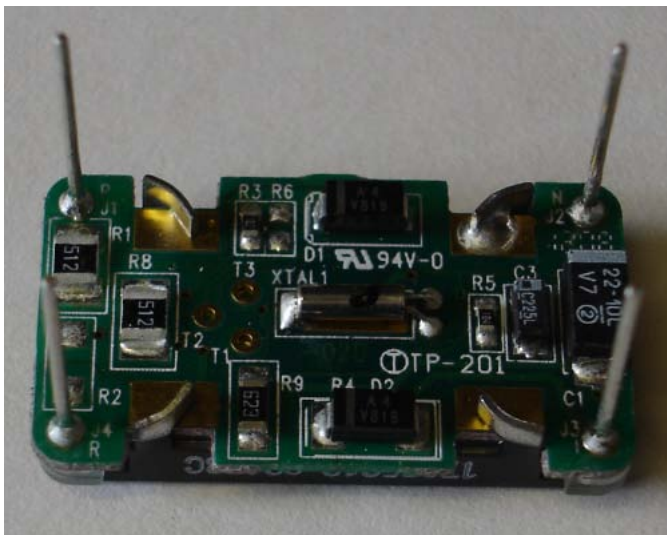
Dis-assemble tacho (1,2,3) The needle just pulls off take care not to bend it:



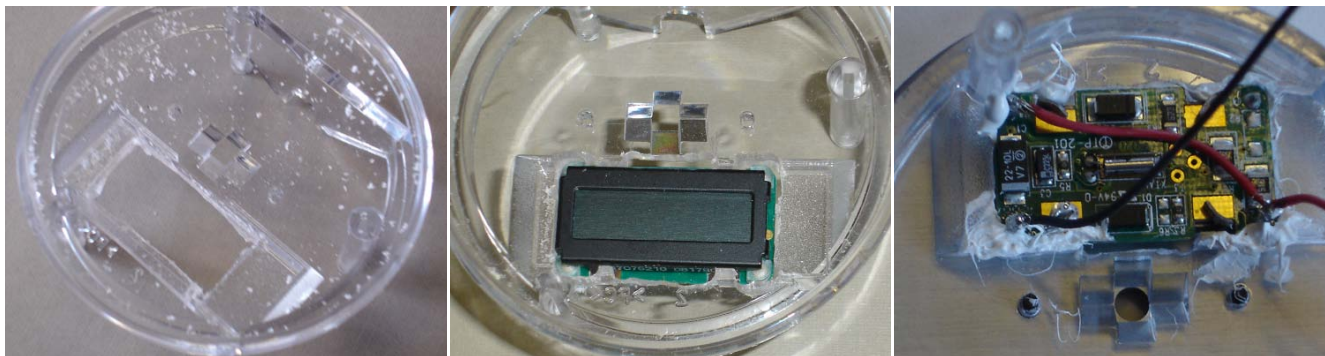
The old LCD display can be prised out with a blade under the edge - the ribbon cable 'can' be pulled out but it is better to try and lever up the sides of the white terminal block to release (5,6,7):



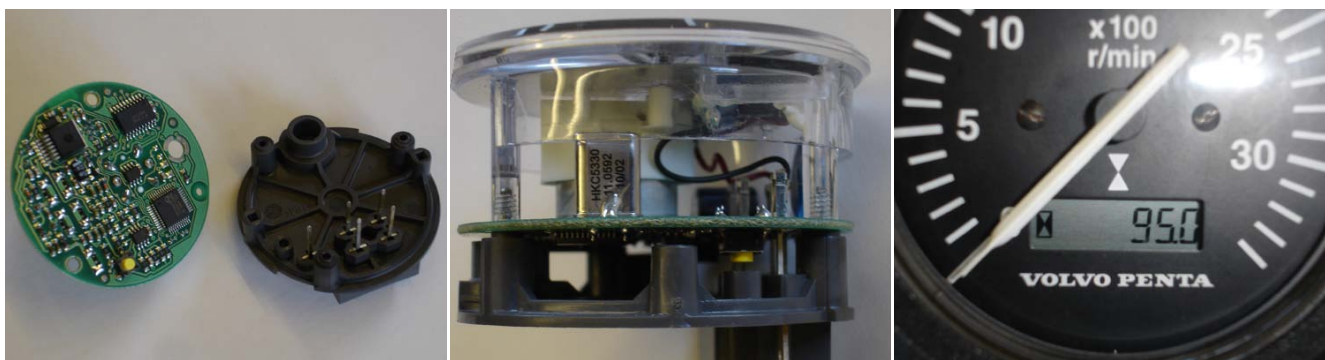
This is the back of the new LCD (8):



You then need to alter the cut-out to fit the new LC (9) I used a small saw blade and some files.  
The LCD fitted into place (10) I used silicone to fix it.  
Wires soldered onto the terminals at the back (11)



The parts of the tachometer separated to solder on the wires to the input terminals (12) on the back of the circuit board then re-assembled (13)  
Finished meter (14)



If you need more detail about any part - let me know.

Richard Davis <karkari393@yahoo.co.uk>